

DO NOT
SCALE FROM
THIS PRINT

ZF5-XX-XX-XX-WT-XX

NO OF POSITIONS
-04 THRU -50

OPTIONS
-TR: TAPE AND REEL
(SEE SHEET 3, FIG. 3)

WELD TAB

LEAD STYLE

-01: CONTACT BOTTOM
-02: CONTACT TOP
-03: VERTICAL

PLATING SPECIFICATION
-T: PURE TIN, MATTE FINISH
-TM: PURE TIN, MATTE FINISH
(SEE NOTE 7)

<C8

Top view drawing of a component showing dimensions and tolerances:

- Overall width: $((\text{No OF POS} \times .0197[0.500]) + .171[4.35]) \pm .010[0.25]$
- Distance between mounting holes: $((\text{No OF POS}-1) \times .0197[0.500] \pm .004[0.10])$
- Mounting hole pitch: $.0197[0.50]$ (TOLERANCE NON-ACCUM) C2
- Mounting hole diameter: C1
- Distance from mounting hole to edge: $.031 \pm .008[0]$ C7
- Reference dimension: "B" REF
- Reference dimension: "A" (SEE TABLE 2)

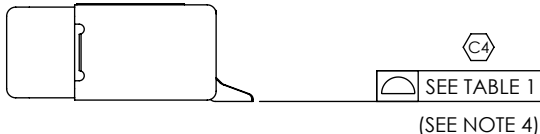
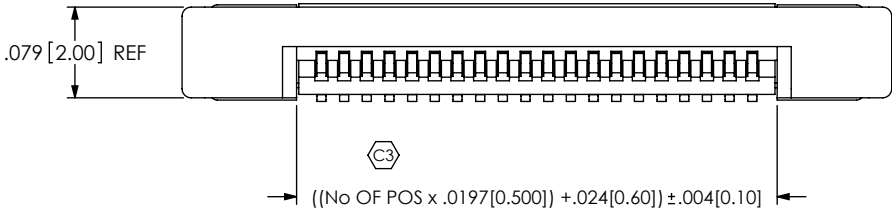
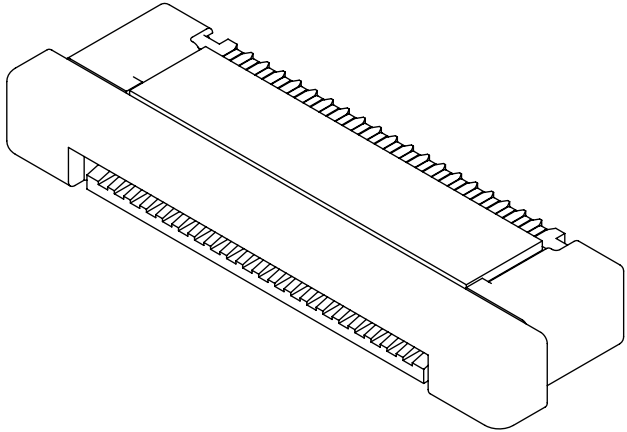


FIG 1
ZF5-20-01-X-WT SHOWN
(WITH CAM CLOSED)

TABLE

No OF POS.	"A"	"B"	"C"	"D"
-04 THRU -29	.182 [4.62]	0.059 [1.50]	0.082 [2.08]	0.185 [4.70]
-30 THRU -39	.186 [4.72]	0.063 [1.60]	0.086 [2.18]	0.189 [4.80]
-40 THRU -50	.190 [4.82]	0.067 [1.70]	0.090 [2.29]	0.193 [4.90]

NOTES:

1. © REPRESENTS A CRITICAL DIMENSION.
2. MAX BURR ALLOWANCE: .0010[.025].
3. MIN CONTACT PUSHOUT FORCE: 6 OZ.
4. CO-PLANARITY INCLUDES TAILS AND WELD TABS.
5. WELD TAB RETENTION: 6 OZ.
6. BREAKOFF BURR NOT TO EXCEED .007[0.18] AND MUST REMAIN ATTACHED.
7. .000040 MIN NICKEL AND .000100 - .000200 MIN TIN
8. PIN 1 TO HAVE ORIENTATION AS SHOWN.
9. NOTE DELETED.

TABLE

No OF POS.	COPLANARITY
-04 THRU -30	.0040[0.101]
-31 THRU -50	.0060[0.152]

UNLESS OTHERWISE SPECIFIED,
DIMENSIONS ARE IN INCHES.

TOLERANCES ARE:

DECIMALS	ANGLES
0.0001	3.6×10^{-5}
0.001	3.6×10^{-4}
0.01	3.6×10^{-3}
0.1	3.6×10^{-2}
1	3.6×10^{-1}
10	3.6
100	36
1000	360
10000	3600
100000	36000
1000000	360000
10000000	3600000
100000000	36000000
1000000000	360000000
10000000000	3600000000
100000000000	36000000000
1000000000000	360000000000
10000000000000	3600000000000
100000000000000	36000000000000
1000000000000000	360000000000000
10000000000000000	3600000000000000
100000000000000000	36000000000000000
1000000000000000000	360000000000000000
10000000000000000000	3600000000000000000
100000000000000000000	36000000000000000000
1000000000000000000000	360000000000000000000
10000000000000000000000	3600000000000000000000
100000000000000000000000	36000000000000000000000
1000000000000000000000000	360000000000000000000000
10000000000000000000000000	$3600000000000000000000000$
100000000000000000000000000	$36000000000000000000000000$
1000000000000000000000000000	$360000000000000000000000000$
10000000000000000000000000000	$3600000000000000000000000000$
100000000000000000000000000000	$36000000000000000000000000000$
1000000000000000000000000000000	$360000000000000000000000000000$
10000000000000000000000000000000	$3600000000000000000000000000000$
100000000000000000000000000000000	$36000000000000000000000000000000$
1000000000000000000000000000000000	$360000000000000000000000000000000$
10000000000000000000000000000000000	$3600000000000000000000000000000000$
100000000000000000000000000000000000	$36000000000000000000000000000000000$
1000000000000000000000000000000000000	$360000000000000000000000000000000000$
10000000000000000000000000000000000000	$3600000000000000000000000000000000000$
100000000000000000000000000000000000000	$36000000000000000000000000000000000000$
1000000000000000000000000000000000000000	$360000000000000000000000000000000000000$
100	$3600000000000000000000000000000000000000$
1000	$36000000000000000000000000000000000000000$
100	3600
1000	36000
100	3600
1000	36000
100	3600
1000	36000
100	3600
1000	36000
100	3600
1000	36000

.XX: $\pm .01 [0.3]$	2
----------------------	---

.XXXX: $\pm .0020[0.051]$

PROPRIETARY NOTE

THIS DOCUMENT CONTAINS INFORMATION
CONFIDENTIAL AND PROPRIETARY TO
SAMTEC, INC. AND SHALL NOT BE REPRODUCED
OR TRANSFERRED TO OTHER DOCUMENTS OR
DISCLOSED TO OTHERS OR USED FOR ANY
PURPOSE OTHER THAN THAT WHICH IT WAS
OBTAINED WITHOUT THE EXPRESSED WRITTEN
CONSENT OF SAMTEC, INC.

MATERIAL: DO NOT SCALE DRAWING

SHEET SCALE: 6:1

HOUSING: LCP, COLOR: NATURAL
CAM SLIDER: LCP, COLOR: BLACK
CONTACT & WELD TAB:
PHOS BRONZE

MAX FLASH ALLOWED: .002

C:\EnterpriseVault\DWG\MISC\MKTG\ZF5-XX-XX-XX-WT-XX-MKT.SLDDRW

DESCRIPTION:

ZERO INSERTION FORCE .5mm ASSEMBLY

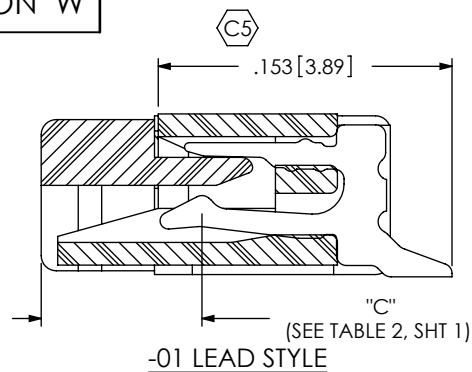
DWG. NO.

ZF5-XX-XX-XX-WT-XX

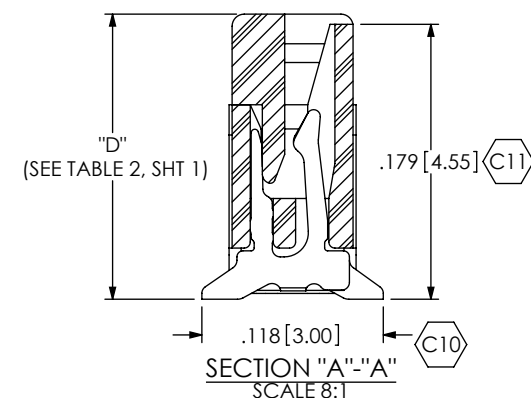
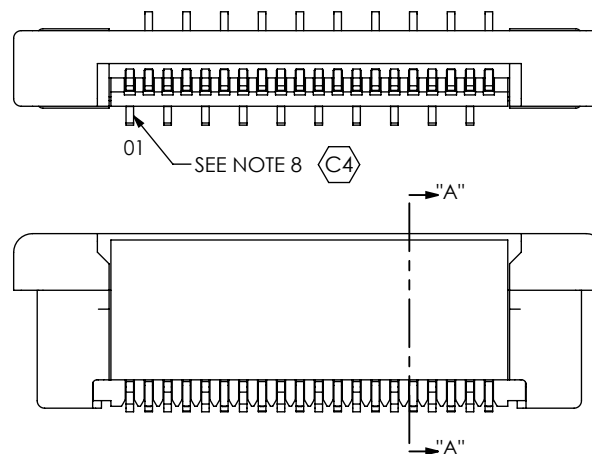
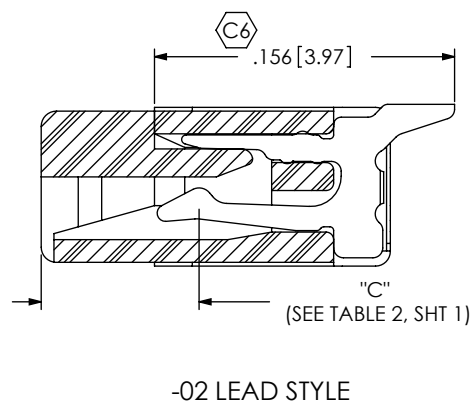
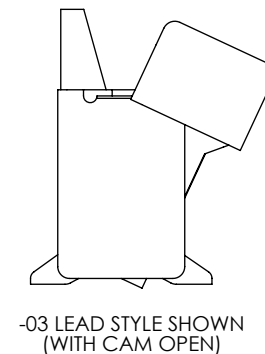
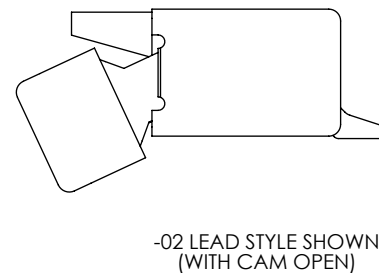
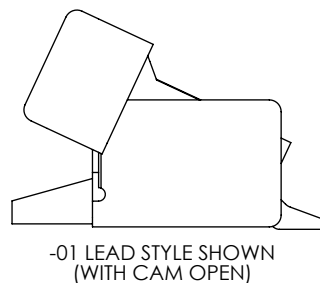
BY: DEAN P

12/12/2000 | SHEET 1 OF 3

REVISION W



APPLICATION VIEWS



PACKAGING VIEWS (-TR OPTION SHOWN ON SHEET 3) [PARTS TO HAVE POSITION #1 LOADED IN SAME DIRECTION AS ARROW ON TUBE]

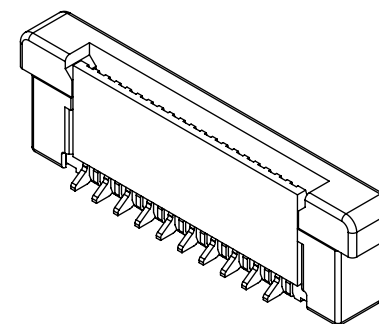
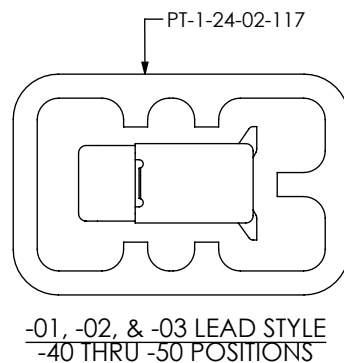
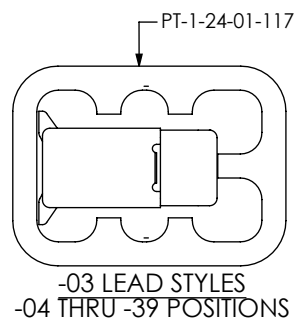
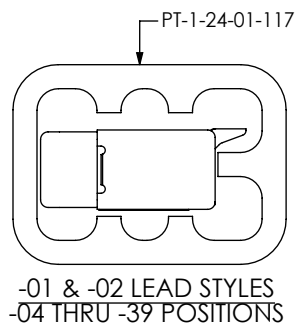


FIG 2
-03 LEAD STYLE
(SAME AS FIG 1, EXCEPT AS SHOWN)
(ZF5-20-03-T-WT-SHOWN)

PROPRIETARY NOTE

THIS DOCUMENT CONTAINS INFORMATION
CONFIDENTIAL AND PROPRIETARY TO
SAMTEC, INC. AND SHALL NOT BE REPRODUCED
OR TRANSFERRED TO OTHER DOCUMENTS OR
DISCLOSED TO OTHERS OR USED FOR ANY
PURPOSE OTHER THAN THAT WHICH IT WAS
OBTAINED WITHOUT THE EXPRESSED WRITTEN
CONSENT OF SAMTEC, INC.

DO NOT SCALE DRAWING

SHEET SCALE: 10:1

samtec

520 PARK EAST BLVD, NEW ALBANY, IN 47150
PHONE: 812-944-6733 FAX: 812-948-5047
e-Mail: info@SAMTEC.com code 55322

DESCRIPTION:
ZERO INSERTION FORCE .5mm ASSEMBLY

DWG. NO.
ZF5-XX-XX-XX-WT-XX

BY: DEAN P 12/12/2000 SHEET 2 OF 3

PACKAGING TABLE

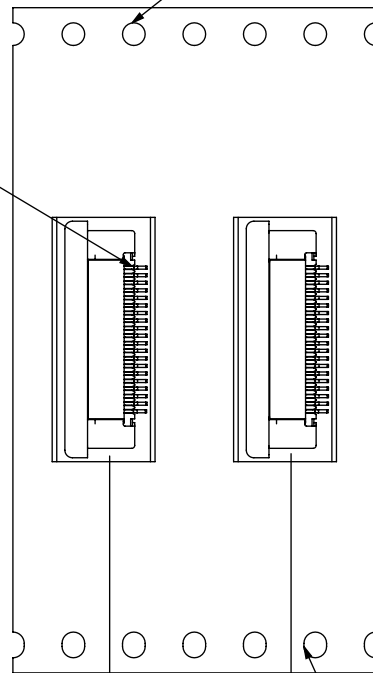
LEAD STYLE	No OF POS.	PACKAGING TUBE	TUBE PLUG
-01, -02 & -03	-04 THRU -39	PT-1-24-01-117	TP-24
	-40 THRU -50	PT-1-24-02-117	TP-24

-01 LEAD STYLE

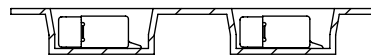
NOTE: PIN 1 CLOSEST TO ROUND HOLES

ROUND HOLES

POS 1

.472 [12.00]
REF

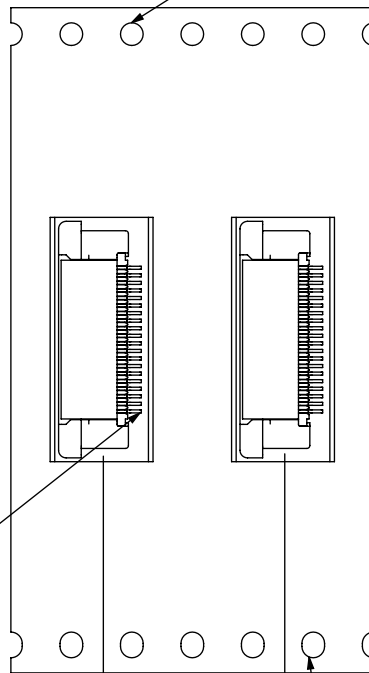
OBLONG HOLES

USER DIRECTION OF UN-REELING
POCKET NOT DETAILED**-02 LEAD STYLE**

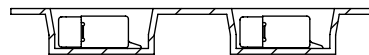
NOTE: PIN 1 CLOSEST TO OBLONG HOLES

ROUND HOLES

POS 1

.472 [12.00]
REF

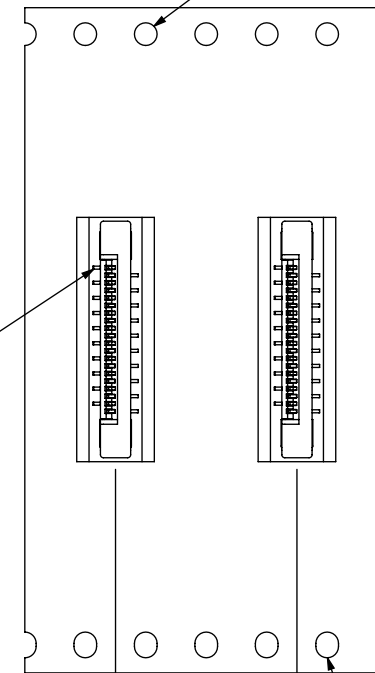
OBLONG HOLES

USER DIRECTION OF UN-REELING
POCKET NOT DETAILED**-03 LEAD STYLE**

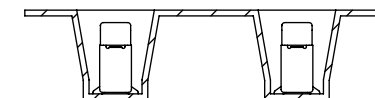
NOTE: PIN 1 CLOSEST TO ROUND HOLES

ROUND HOLES

POS 01

.472 [12.00]
REF

OBLONG HOLES

USER DIRECTION OF UN-REELING
POCKET NOT DETAILED**PROPRIETARY NOTE**

THIS DOCUMENT CONTAINS INFORMATION
CONFIDENTIAL AND PROPRIETARY TO
SAMTEC, INC. AND SHALL NOT BE REPRODUCED
OR TRANSFERRED TO OTHER DOCUMENTS OR
DISCLOSED TO OTHERS OR USED FOR ANY
PURPOSE OTHER THAN THAT WHICH IT WAS
OBTAINED WITHOUT THE EXPRESSED WRITTEN
CONSENT OF SAMTEC, INC.

SHEET SCALE: 2:1

520 PARK EAST BLVD, NEW ALBANY, IN 47150
PHONE: 812-944-6733 FAX: 812-948-5047
e-Mail: info@SAMTEC.com code 55322

DESCRIPTION:
ZERO INSERTION FORCE .5mm ASSEMBLY

DWG. NO. ZF5-XX-XX-XX-WT-XX

BY: DEAN P 12/12/2000 SHEET 3 OF 3