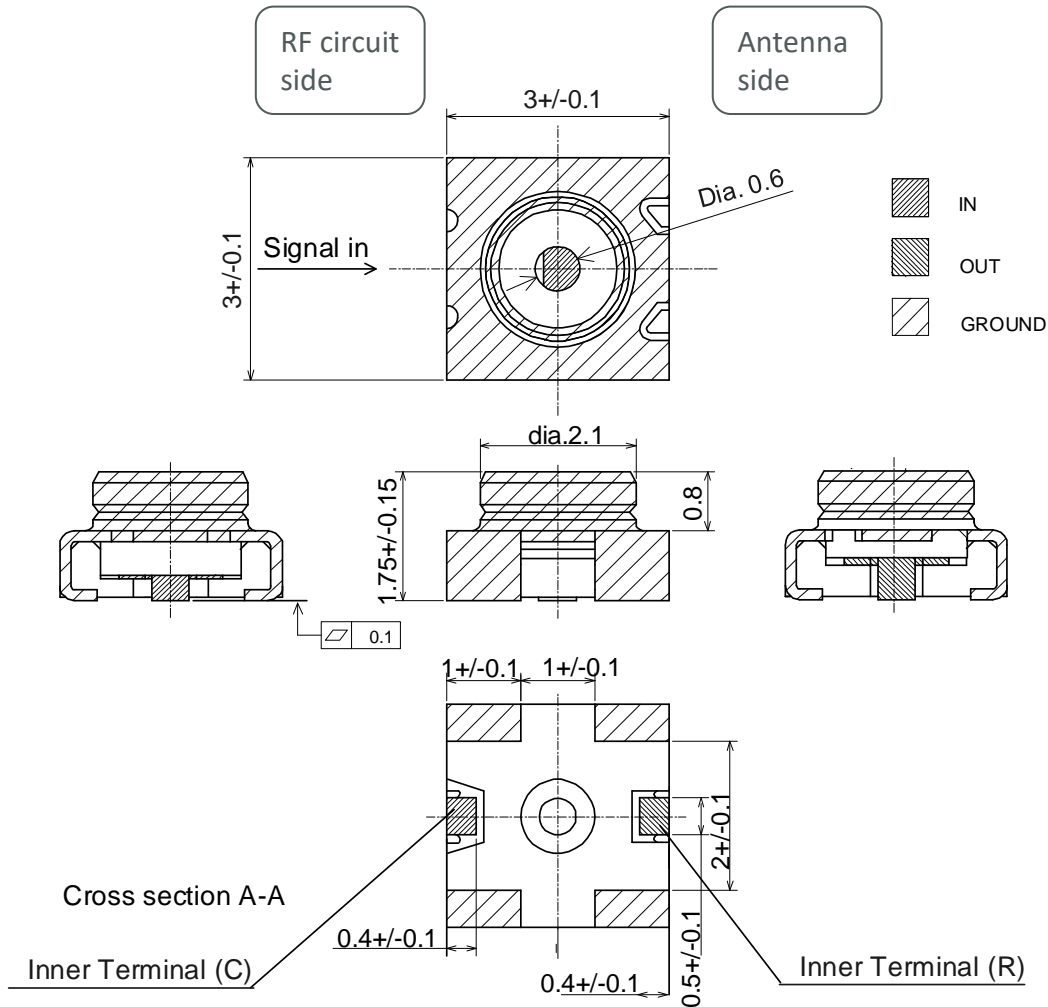


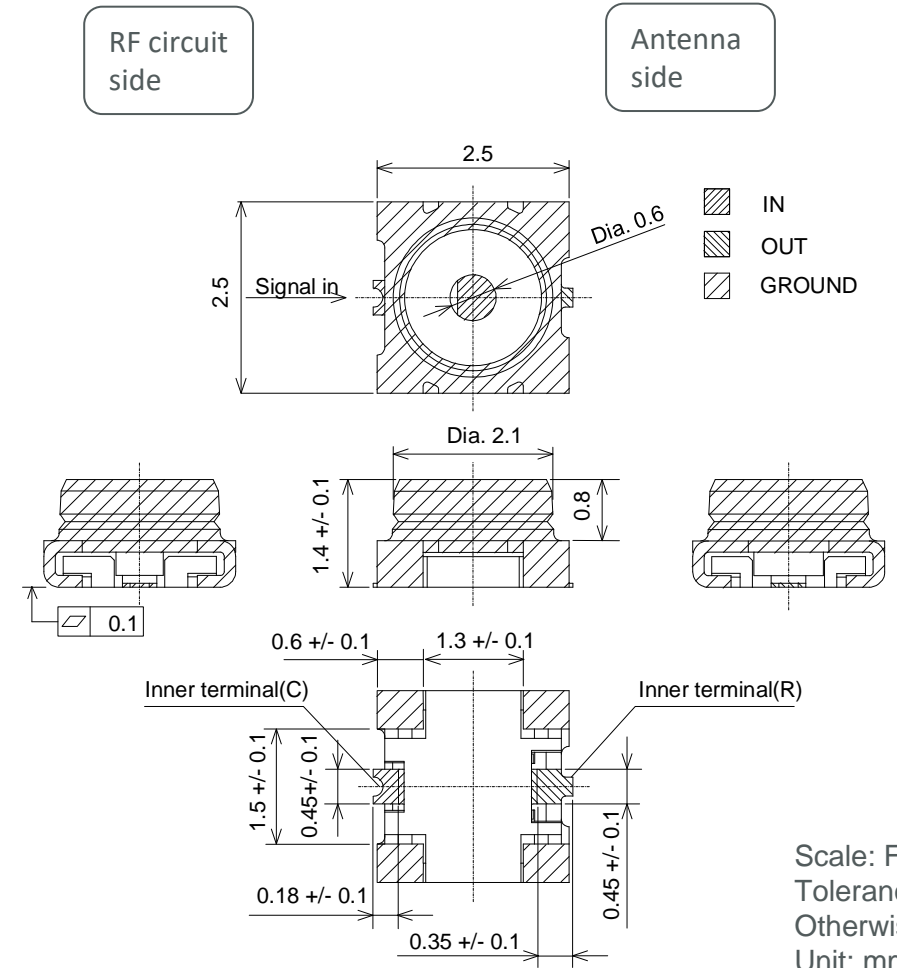
# Connector Comparison SWD and SWF

# Shape and Dimension

**SWD (P/N: MM8430-2610)**




**SWF (P/N: MM8130-2600)**



Scale: Free  
Tolerances Unless  
Otherwise Specified: +/-0.2  
Unit: mm

**SWF is smaller than SWD**

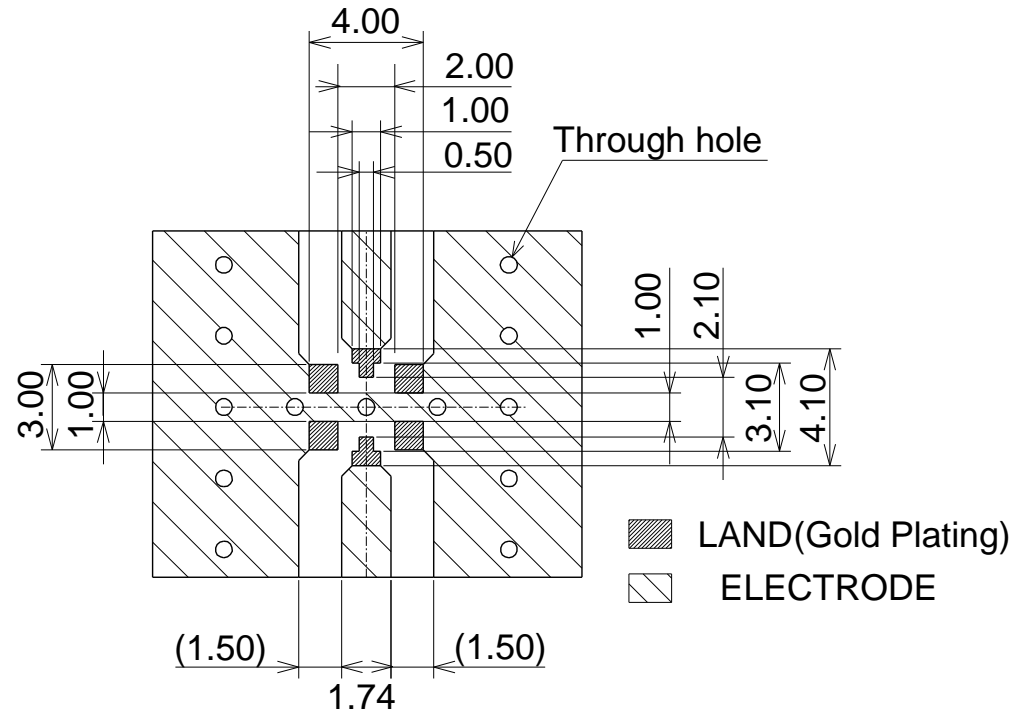
# Characteristic

Items	SWD P/N: MM8430-2610 	SWF P/N: MM8130-2600 
<b>Frequency Rating</b>	Up to 6GHz	Up to 6GHz
<b>Nominal Impedance</b>	50Ω	50Ω
<b>Temperature Rating</b>	-40 to +85 °C	-40 to +85 °C
<b>Voltage Rating</b>	30V r.m.s. max.	30V r.m.s. max.
<b>Contact Resistance</b>	50mΩ max.	70mΩ max.
<b>Withstanding Voltage</b>	AC300+/-20V r.m.s, 1minutes	AC300+/-20V r.m.s, 1minutes
<b>Insulation Resistance</b>	500MΩ min.	500MΩ min.
<b>VSWR</b>	1.2 max. (DC to 3GHz) 1.3 max. (3GHz to 6GHz)	1.2 max. (DC to 3GHz) 1.3 max. (3GHz to 6GHz)
<b>Insertion Loss</b>	0.1dB max. (DC to 3GHz) 0.2dB max. (3GHz to 6GHz)	0.1dB max. (DC to 3GHz) 0.2dB max. (3GHz to 6GHz)
<b>Isolation</b>	20dB min. (DC to 3GHz) 15dB min. (3GHz to 6GHz)	20dB min. (DC to 3GHz) 15dB min. (3GHz to 6GHz)
<b>Durability</b>	500 cycles	100 cycles

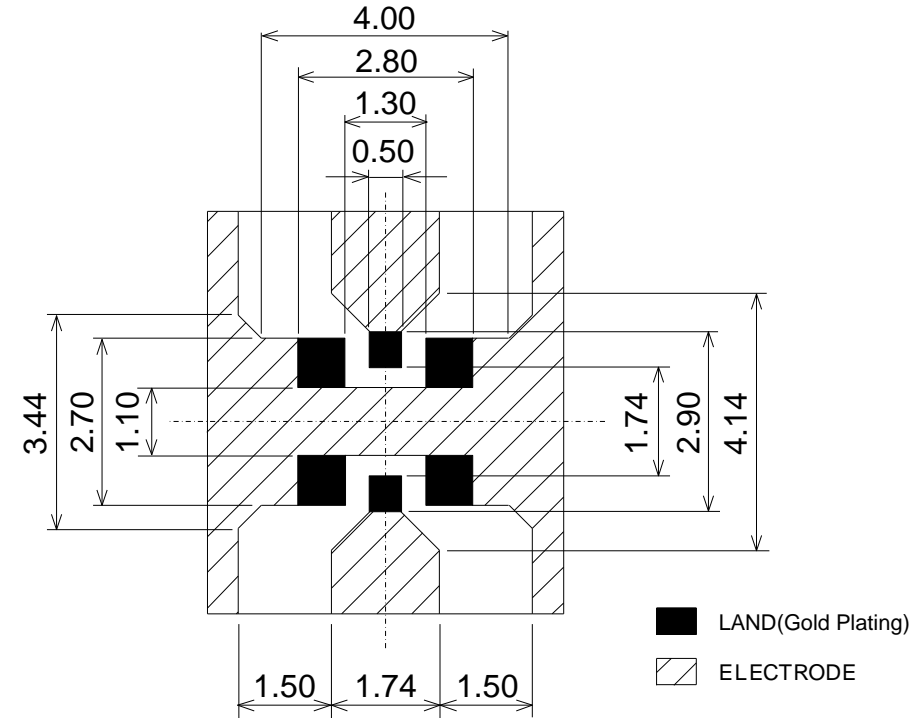
**No electrical degradation in size reduction**

# Land pattern

**SWD (P/N: MM8430-2610)**



**SWF (P/N: MM8130-2600)**

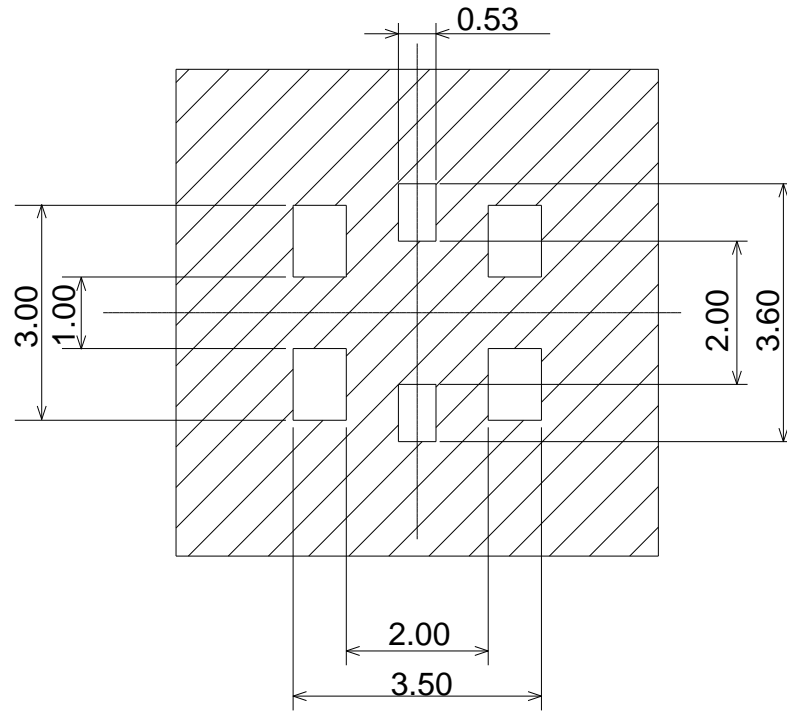


Unit: mm

The material of PCB. is the epoxy resin of glass fabric base.  
 (Dielectric constant = 4.3@1GHz) Thickness is 1.0mm

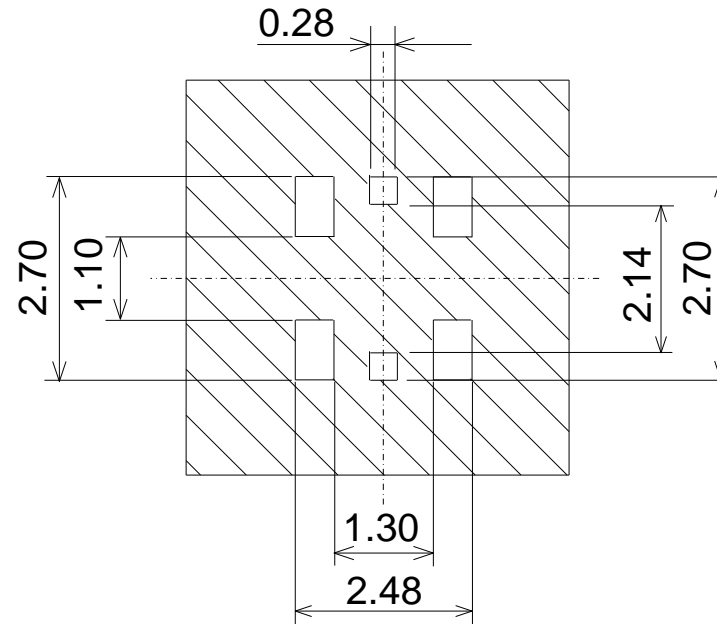
# Stencil mask

SWD (P/N: MM8430-2610)



Thickness is 0.10mm

SWF (P/N: MM8130-2600)

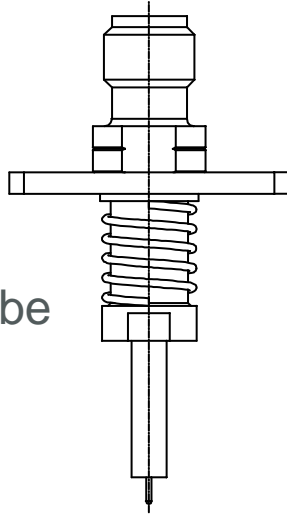


Thickness is 0.12mm

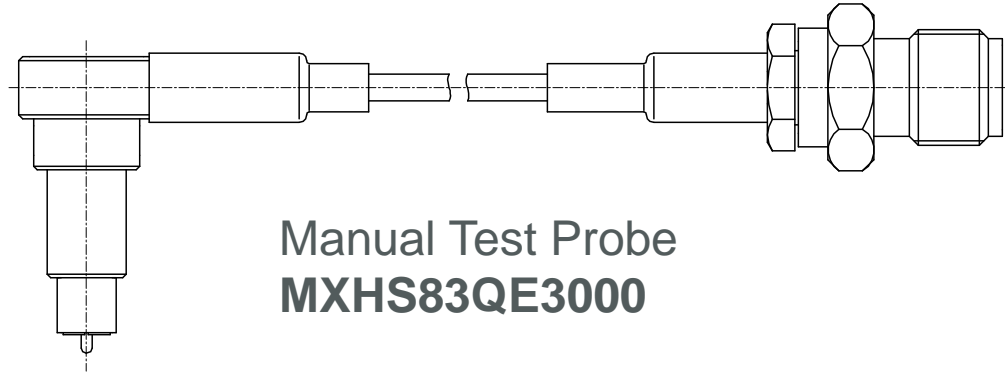
Unit: mm

# Probes

Auto Test Probe  
MM126320

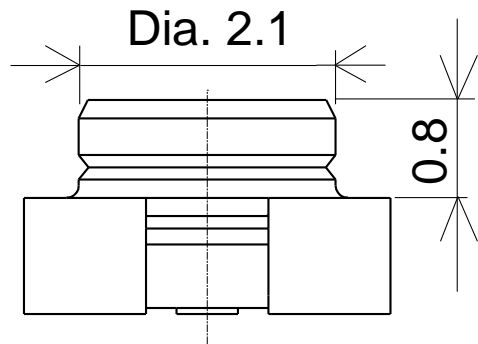


Manual Test Probe  
MXHS83QE3000

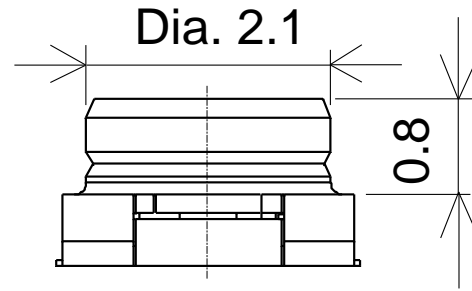


**Common!!**

**No need to change test probes**










SWD (P/N: MM8430-2610)



SWF (P/N: MM8130-2600)

# Appendix: Test probe/adapter line up

Series	Part No.	Automatic Probe	Manual Probe (with locking function)		Adapter	
		SMA type	With Cable	Without Cable	Straight	Right
SWD	<b>MM8430-2610</b>  3x3x1.75	<b>Std MM126320</b> (Pitch: min. 9.3mm)   Others: <b>MM126314</b> <b>MM126036</b>	<b>Std MXHS83QE3000</b> (SMA-Female, 300mm) <b>MXHS83QE1000</b> (SMA-Female, 100mm) 	<b>MM126056</b> 	<b>MM126054</b> 	<b>MM126059</b> 
	<b>MM8130-2600</b>  2.5x2.5x1.4					

**Common!!**

**No need to change test probes/adapters**