

Title of Document:	<b>Request for Change</b>	Issue No. G21-05870	Rev. 0
Customer:		Issue date: September 7, 2021	
Title subject:	PA 9T GN2330-1 KW011 manufactured by Kuraray Change to alternative materials due to toning agent supply restrictions	Revision date:	

We have been informed by Kuraray, the manufacturer of the toning agent used in the above-mentioned subject material, that the supply of toning agent to Kuraray has been restricted and that it is difficult to produce the same material. Therefore, we would like to change to an alternative material from the current material as follows.

**1. Target product**

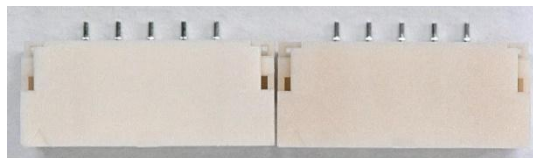
1.25FJX, APSH, CIF, CPT, FWG, GEZ, GH, GH2, GHD, KCC, KPSH, NSHD, PA, SHLD, SHLD2, SHLV, SUR, XSR, ZE, and ZND connectors <See appendix for part numbers.>

**2. Timing of the change**

Shipment is scheduled to start in October 2021.

**3. Contents of the change**

The material of the products in Section 1 shall be changed from “GN2330-1 KW011” to “GN2330-1 NA without toning agent”. According to this change, the connector performance and the overseas standards remain unchanged. In addition, the color tone will be changed as follows.



Before change                      After change

Photo: Comparison of color tone with GH connector <e.g.: Top surface of S05B-GHS-TB (LF)(SN)>

**4. Reason for the change**

This change will be carried out because the material manufacturer is difficulty of procuring the raw material (toning agent).

Your thought understanding and consideration would be very much appreciated.

Prepared by: <i>A. Okuni</i>	Checked by: <i>M. Ueda</i>	Reviewed by: <i>M. Arai</i>	Approved by: <i>T. Fujiwara</i>
---------------------------------	-------------------------------	--------------------------------	------------------------------------

**G21-05870 Appendix Target products**

No.	Series	Part Number
1	SUR	SM02B-SURS-GAN-G-TF ;
2	SUR	SM02B-SURS-TF (LF)(SN) ;
3	SUR	SM02B-SURS-ETF (LF)(SN);
4	SUR	SM03B-SURS-ETF (LF)(SN);
5	SUR	SM03B-SURS-GAN-TF(LF)(SN;
6	SUR	SM03B-SURS-TF (LF)(SN) ;
7	SUR	SM04B-SURS-GAN-TF(LF)(SN;
8	SUR	SM04B-SURS-TF (LF)(SN) ;
9	SUR	SM05B-SURS-TF (LF)(SN) ;
10	SUR	SM05B-SURS-ETF (LF)(SN);
11	SUR	SM05B-SURS-GAN-TF(LF)(SN;
12	SUR	SM06B-SURS-GAN-TF(LF)(SN;
13	SUR	SM06B-SURS-TF (LF)(SN) ;
14	SUR	SM08B-SURS-TF (LF)(SN) ;
15	SUR	SM08B-SURS-GAN-TF(LF)(SN;
16	SUR	SM10B-SURS-TF (LF)(SN) ;
17	SUR	SM12B-SURS-GAN-TF(LF)(SN;
18	SUR	SM12B-SURS-TF (LF)(SN) ;
19	SUR	SM14B-SURS-GAN-TF(LF)(SN;
20	SUR	SM14B-SURS-TF (LF)(SN) ;
21	SUR	SM15B-SURS-TF (LF)(SN) ;
22	SUR	SM16B-SURS-TF (LF)(SN) ;
23	SUR	SM17B-SURS-TF (LF)(SN) ;
24	SUR	SM20B-SURS-TF (LF)(SN) ;
25	SUR	SM22B-SURS-TF (LF)(SN) ;
26	SUR	BM02B-SURS-TF (LF)(SN) ;
27	SUR	BM02B-SURS-GAN-TF(LF)(SN;
28	SUR	BM03B-SURS-TF (LF)(SN) ;
29	SUR	BM03B-SURS-GAN-TF(LF)(SN;
30	SUR	BM04B-SURS-TF (LF)(SN) ;
31	SUR	BM04B-SURS-GAN-TF(LF)(SN;
32	SUR	BM05B-SURS-TF (LF)(SN) ;
33	SUR	BM06B-SURS-TF (LF)(SN) ;
34	SUR	BM08B-SURS-TF (LF)(SN) ;
35	SUR	BM08B-SURS-GAN-TF(LF)(SN;
36	SUR	BM10B-SURS-GAN-TF(LF)(SN;
37	SUR	BM10B-SURS-TF (LF)(SN) ;
38	SUR	BM12B-SURS-TF (LF)(SN) ;
39	SUR	BM12B-SURS-GAN-TF(LF)(SN;
40	SUR	BM14B-SURS-TF (LF)(SN) ;
41	SUR	BM15B-SURS-TF (LF)(SN) ;
42	SUR	BM16B-SURS-TF (LF)(SN) ;
43	SUR	BM17B-SURS-TF (LF)(SN) ;
44	SUR	BM20B-SURS-TF (LF)(SN) ;
45	SUR	BM02B-SURS-TFT (LF)(SN);
46	SUR	BM03B-SURS-TFT (LF)(SN);
47	SUR	BM04B-SURS-TFT (LF)(SN);
48	SUR	BM06B-SURS-TFT (LF)(SN);
49	SUR	BM08B-SURS-TFT (LF)(SN);
50	SUR	BM10B-SURS-TFT (LF)(SN);
51	SUR	BM10B-SURS-ETFT (LF)(SN);
52	SUR	BM12B-SURS-TFT (LF)(SN);
53	SUR	BM20B-SURS-TFT (LF)(SN);
54	PA	SM02B-PAGS-TB (LF)(SN)
55	PA	SM03B-PAGS-TB (LF)(SN)
56	PA	SM04B-PAGS-TB (LF)(SN)

**G21-05870 Appendix Target products**

No.	Series	Part Number
57	PA	SM05B-PAGS-TB (LF)(SN)
58	PA	SM06B-PAGS-TB (LF)(SN)
59	PA	SM08B-PAGS-TB (LF)(SN)
60	XSR	SM02B-XSRS-TB (LF)(SN) ;
61	XSR	SM02B-XSRS-ETB (LF)(SN);
62	XSR	SM04B-XSRS-ETB (LF)(SN);
63	XSR	SM06B-XSRS-TB (LF)(SN) ;
64	XSR	SM06B-XSRS-ETB (LF)(SN);
65	XSR	SM10B-XSRS-TB (LF)(SN) ;
66	XSR	SM10B-XSRS-ETB (LF)(SN);
67	XSR	SM16B-XSRS-TB (LF)(SN) ;
68	XSR	SM16B-XSRS-ETB (LF)(SN);
69	XSR	SM20B-XSRS-TB (LF)(SN) ;
70	XSR	SM20B-XSRS-ETB (LF)(SN);
71	XSR	SM22B-XSRS-ETB (LF)(SN);
72	GEZ	BM05B-GEZS-TBT
73	GHD	BM10B-GHDS-G-TF (LF)(SN)
74	GHD	BM10B-GHDS-TF (LF)(SN)
75	GHD	BM12B-GHDS-G-TF (LF)(SN)
76	GHD	BM12B-GHDS-TF (LF)(SN)
77	GHD	BM14B-GHDS-G-TF (LF)(SN)
78	GHD	BM14B-GHDS-TF (LF)(SN)
79	GHD	BM16B-GHDS-G-TF (LF)(SN)
80	GHD	BM16B-GHDS-TF (LF)(SN)
81	GHD	BM16B-GHDS-G-1-TF(LF)(SN)
82	GHD	BM18B-GHDS-G-TF (LF)(SN)
83	GHD	BM18B-GHDS-TF (LF)(SN)
84	GHD	BM20B-GHDS-TF (LF)(SN)
85	GHD	BM20B-GHDS-G-TF (LF)(SN)
86	GHD	BM20B-GHDS-GK-TF (LF)(SN)
87	GHD	BM20B-GHDS-1-TF (LF)(SN)
88	GHD	BM22B-GHDS-G-TF (LF)(SN)
89	GHD	BM22B-GHDS-TF (LF)(SN)
90	GHD	BM24B-GHDS-TF (LF)(SN)
91	GHD	BM24B-GHDS-G-TF (LF)(SN)
92	GHD	BM26B-GHDS-G-TF (LF)(SN)
93	GHD	BM26B-GHDS-TF (LF)(SN)
94	GHD	BM28B-GHDS-G-TF (LF)(SN)
95	GHD	BM28B-GHDS-TF (LF)(SN)
96	GHD	BM30B-GHDS-G-1-TF(LF)(SN)
97	GHD	BM30B-GHDS-G-TF (LF)(SN)
98	GHD	BM30B-GHDS-TF (LF)(SN)
99	GHD	BM32B-GHDS-G-TF (LF)(SN)
100	GHD	BM32B-GHDS-TF (LF)(SN)
101	GHD	BM34B-GHDS-TF (LF)(SN)
102	GHD	BM36B-GHDS-G-TF (LF)(SN)
103	GHD	BM36B-GHDS-TF (LF)(SN)
104	GHD	BM38B-GHDS-TF (LF)(SN)
105	GHD	BM38B-GHDS-G-TF (LF)(SN)
106	GHD	BM40B-GHDS-TF (LF)(SN)
107	GHD	BM40B-GHDS-G-TF (LF)(SN)
108	GHD	SM10B-GHDS-A-TF (LF)(SN)
109	GHD	SM10B-GHDS-A-GAN-TF
110	GHD	SM12B-GHDS-A-TF (LF)(SN)
111	GHD	SM12B-GHDS-A-GAN-TF
112	GHD	SM14B-GHDS-A-TF (LF)(SN)

**G21-05870 Appendix Target products**

No.	Series	Part Number
113	GHD	SM14B-GHDS-A-GAN-TF
114	GHD	SM16B-GHDS-A-TF (LF)(SN)
115	GHD	SM16B-GHDS-A-GAN-TF
116	GHD	SM18B-GHDS-A-TF (LF)(SN)
117	GHD	SM18B-GHDS-A-GAN-TF
118	GHD	SM20B-GHDS-A-GAN-TF
119	GHD	SM20B-GHDS-A-TF (LF)(SN)
120	GHD	SM22B-GHDS-A-TF (LF)(SN)
121	GHD	SM22B-GHDS-A-GAN-TF
122	GHD	SM24B-GHDS-A-TF (LF)(SN)
123	GHD	SM24B-GHDS-A-GAN-TF
124	GHD	SM26B-GHDS-A-GAN-TF
125	GHD	SM26B-GHDS-A-TF (LF)(SN)
126	GHD	SM28B-GHDS-A-TF (LF)(SN)
127	GHD	SM28B-GHDS-A-GAN-TF
128	GHD	SM30B-GHDS-A-TF (LF)(SN)
129	GHD	SM30B-GHDS-A-GAN-TF
130	GHD	SM32B-GHDS-A-TF (LF)(SN)
131	GHD	SM34B-GHDS-A-TF (LF)(SN)
132	GHD	SM36B-GHDS-A-GAN-TF
133	GHD	SM36B-GHDS-A-TF (LF)(SN)
134	GHD	SM38B-GHDS-A-GAN-TF
135	GHD	SM38B-GHDS-A-TF (LF)(SN)
136	ZE	BM02B-ZESS-G-TBT(LF)(SN)-
137	ZE	BM02B-ZESS-TBT (LF)(SN)-
138	ZE	BM02B-ZEVS-TBT (LF)(SN)-
139	ZE	BM03B-ZESS-TBT (LF)(SN)-
140	ZE	BM03B-ZEVS-TBT (LF)(SN)-
141	ZE	BM04B-ZESS-G-TBT(LF)(SN)-
142	ZE	BM04B-ZESS-TBT (LF)(SN)-
143	ZE	BM04B-ZEVS-TBT (LF)(SN)-
144	ZE	BM05B-ZEVS-TBT (LF)(SN)-
145	ZE	BM05B-ZESS-TBT (LF)(SN)-
146	ZE	BM06B-ZEVS-TBT (LF)(SN)-
147	ZE	BM06B-ZESS-TBT (LF)(SN)-
148	ZE	BM06B-ZESS-TBT (LF)(SN)-
149	ZE	BM06B-ZEVS-TBT (LF)(SN)-
150	ZE	BM07B-ZEVS-TBT (LF)(SN)-
151	ZE	BM07B-ZESS-TBT (LF)(SN)-
152	ZE	BM07B-ZEVS-TBT (LF)(SN)-
153	ZE	BM07B-ZESS-TBT (LF)(SN)-
154	ZE	BM08B-ZEVS-TBT (LF)(SN)-
155	ZE	BM08B-ZESS-TBT (LF)(SN)-
156	ZE	BM08B-ZESS-TBT (LF)(SN)-
157	ZE	BM08B-ZEVS-TBT (LF)(SN)-
158	ZE	BM09B-ZESS-TBT (LF)(SN)-
159	ZE	BM09B-ZEVS-TBT (LF)(SN)-
160	ZE	BM09B-ZESS-TBT (LF)(SN)-
161	ZE	BM09B-ZEVS-TBT (LF)(SN)-
162	ZE	BM10B-ZESS-TBT (LF)(SN)-
163	ZE	BM10B-ZEVS-TBT (LF)(SN)-
164	ZE	BM10B-ZESS-TBT (LF)(SN)-
165	ZE	BM10B-ZEVS-TBT (LF)(SN)-
166	ZE	BM11B-ZEVS-TBT (LF)(SN)-
167	ZE	BM11B-ZESS-TBT (LF)(SN)-
168	ZE	BM11B-ZESS-TBT (LF)(SN)-

**G21-05870 Appendix Target products**

No.	Series	Part Number
169	ZE	BM11B-ZEVS-TBT (LF)(SN)-
170	ZE	BM12B-ZEVS-TBT (LF)(SN)-
171	ZE	BM12B-ZESS-TBT (LF)(SN)-
172	ZE	BM12B-ZEVS-TBT (LF)(SN)-
173	ZE	BM12B-ZESS-TBT (LF)(SN)-
174	ZE	BM13B-ZEVS-TBT (LF)(SN)-
175	ZE	BM13B-ZESS-TBT (LF)(SN)-
176	ZE	BM13B-ZESS-TBT (LF)(SN)-
177	ZE	BM13B-ZEVS-TBT (LF)(SN)-
178	ZE	BM14B-ZESS-TBT (LF)(SN)-
179	ZE	BM14B-ZEVS-TBT (LF)(SN)-
180	ZE	BM14B-ZESS-TBT (LF)(SN)-
181	ZE	BM14B-ZEVS-TBT (LF)(SN)-
182	ZE	BM15B-ZESS-TBT (LF)(SN)-
183	ZE	BM15B-ZEVS-TBT (LF)(SN)-
184	ZE	BM15B-ZESS-TBT (LF)(SN)-
185	ZE	BM15B-ZEVS-TBT (LF)(SN)-
186	ZE	BM16B-ZESS-TBT (LF)(SN)-
187	ZE	BM16B-ZEVS-TBT (LF)(SN)-
188	ZE	BM16B-ZESS-TBT (LF)(SN)-
189	ZE	BM16B-ZEVS-TBT (LF)(SN)-
190	ZE	BM04B-ZESS-TB (LF)(SN)-
191	ZE	BM08B-ZESS-TB (LF)(SN)-
192	ZE	BM08B-ZESS-TB (LF)(SN)
193	ZE	BM08B-ZESS-TB (LF)(SN)-
194	ZE	BM10B-ZESS-TB (LF)(SN)-
195	ZE	BM10B-ZESS-TB (LF)(SN)-
196	ZE	BM13B-ZESS-TB (LF)(SN)-
197	ZE	BM13B-ZESS-TB (LF)(SN)-
198	ZE	SM02B-ZEVS-TB (LF)(SN)-
199	ZE	SM02B-ZESS-TB (LF)(SN)-
200	ZE	SM03B-ZESS-G-TB (LF)(SN)-
201	ZE	SM03B-ZEVS-TB (LF)(SN)-
202	ZE	SM03B-ZESS-TB (LF)(SN)-
203	ZE	SM04B-ZESS-TB (LF)(SN)-
204	ZE	SM04B-ZESS-G-TB (LF)(SN)-
205	ZE	SM04B-ZEVS-TB (LF)(SN)-
206	ZE	SM04B-ZESS-A-TB (LF)(SN)
207	ZE	SM05B-ZEVS-TB (LF)(SN)-
208	ZE	SM05B-ZESS-G-TB (LF)(SN)-
209	ZE	SM05B-ZESS-TB (LF)(SN)-
210	ZE	SM06B-ZESS-TB (LF)(SN)-
211	ZE	SM06B-ZEVS-TB (LF)(SN)-
212	ZE	SM06B-ZESS-GW-TB(LF)(SN)-
213	ZE	SM06B-ZESS-G-TB (LF)(SN)-
214	ZE	SM06B-ZEVS-TB (LF)(SN)-
215	ZE	SM06B-ZESS-GW-TB(LF)(SN)-
216	ZE	SM06B-ZESS-TB (LF)(SN)-
217	ZE	SM06B-ZESS-A-TB (LF)(SN)
218	ZE	SM07B-ZEVS-TB (LF)(SN)-
219	ZE	SM07B-ZESS-G-TB (LF)(SN)-
220	ZE	SM07B-ZESS-TB (LF)(SN)-
221	ZE	SM07B-ZESS-TB (LF)(SN)-
222	ZE	SM07B-ZEVS-TB (LF)(SN)-
223	ZE	SM07B-ZESS-G-TB (LF)(SN)-
224	ZE	SM08B-ZESS-TB (LF)(SN)-

**G21-05870 Appendix Target products**

No.	Series	Part Number
225	ZE	SM08B-ZEVS-TB (LF)(SN)-
226	ZE	SM08B-ZESS-G-TB (LF)(SN)-
227	ZE	SM08B-ZESS-TB (LF)(SN)-
228	ZE	SM08B-ZEVS-TB (LF)(SN)-
229	ZE	SM09B-ZEVS-TB (LF)(SN)-
230	ZE	SM09B-ZESS-TB (LF)(SN)-
231	ZE	SM09B-ZESS-TB (LF)(SN)-
232	ZE	SM09B-ZEVS-TB (LF)(SN)-
233	ZE	SM09B-ZESS-A-TB (LF)(SN)
234	ZE	SM10B-ZEVS-TB (LF)(SN)-
235	ZE	SM10B-ZESS-TB (LF)(SN)-
236	ZE	SM10B-ZESS-TB (LF)(SN)-
237	ZE	SM10B-ZEVS-TB (LF)(SN)-
238	ZE	SM11B-ZESS-TB (LF)(SN)-
239	ZE	SM11B-ZEVS-TB (LF)(SN)-
240	ZE	SM11B-ZESS-TB (LF)(SN)-
241	ZE	SM11B-ZEVS-TB (LF)(SN)-
242	ZE	SM12B-ZESS-G-TB (LF)(SN)-
243	ZE	SM9(12-345)B-ZESS-TB(LFSN
244	ZE	SM12B-ZEVS-TB (LF)(SN)-
245	ZE	SM12B-ZESS-TB (LF)(SN)-
246	ZE	SM9(12-345)B-ZESS-TB(LFSN
247	ZE	SM12B-ZESS-G-TB (LF)(SN)-
248	ZE	SM12B-ZEVS-TB (LF)(SN)-
249	ZE	SM12B-ZESS-TB (LF)(SN)-
250	ZE	SM13B-ZEVS-TB (LF)(SN)-
251	ZE	SM13B-ZESS-TB (LF)(SN)-
252	ZE	SM13B-ZEVS-TB (LF)(SN)-
253	ZE	SM13B-ZESS-TB (LF)(SN)-
254	ZE	SM14B-ZESS-TB (LF)(SN)-
255	ZE	SM14B-ZEVS-TB (LF)(SN)-
256	ZE	SM14B-ZEVS-TB (LF)(SN)-
257	ZE	SM14B-ZESS-TB (LF)(SN)-
258	ZE	SM15B-ZESS-TB (LF)(SN)-
259	ZE	SM15B-ZEVS-TB (LF)(SN)-
260	ZE	SM15B-ZEVS-TB (LF)(SN)-
261	ZE	SM15B-ZESS-TB (LF)(SN)-
262	ZE	SM16B-ZESS-TB (LF)(SN)-
263	ZE	SM16B-ZEVS-TB (LF)(SN)-
264	ZE	SM16B-ZESS-G-TB (LF)(SN)-
265	ZE	SM16B-ZESS-TB (LF)(SN)-
266	ZE	SM16B-ZEVS-TB (LF)(SN)-
267	ZE	SM16B-ZESS-G-TB (LF)(SN)-
268	GEZ	SM06B-GEVS-TB
269	FWG	31FWG-RSM1-GAN-Z-1-TB
270	FWG	41FWG-RSM1-GAN-Z-1-TB
271	FWG	51FWG-RSM1-GAN-Z-1-TB
272	APSH	BM03B-APSHSS-ETFT(LF)(SN)
273	KPSH	Wafer EM01-KPSCH-A2S
274	KCC	Wafer E01-KCCH-G2S
275	GHD	Wafer BM16-GHDS-1
276	ZE	Wafer BM08-ZES-A
277	1.25FJX	9R-1.25FJX-SM-TF (LF)(SN
278	1.25FJX	15R-1.25FJX-SM-TF(LF)(SN)
279	1.25FJX	19R-1.25FJX-SM-TF(LF)(SN)
280	SHLD	BM20B-SHLDS-G-TFT(LF)(SN;-

**G21-05870 Appendix Target products**

No.	Series	Part Number
281	SHLD	BM20B-SHLDS-G-TF(LF)(SN;-
282	SHLD	BM20B-SHLDS-G-L-TFTLFSN;-
283	SHLD	BM20B-SHLDS-G-TFT(LFSNC;-
284	SHLD	BM20B-SHLDS-G-TF(LF)(SN(A
285	SHLD	BM20B-SHLDS-G-TFT(LF)(SN(A
286	SHLD	BM20B-SHLDS-GD-TFT(LF)(SN
287	SHLD	BM30B-SHLDS-G-TFT(LF)(SN;-
288	SHLD	BM30B-SHLDS-G-L-TFTLFSN;-
289	SHLD	BM30B-SHLDS-G-TFT(LFSNC;-
290	SHLD	BM30B-SHLDS-G-TFTLFSNTO;-
291	SHLD	BM30B-SHLDS-G-TFLFSNTO;-
292	SHLD	BM30B-SHLDS-G-TF(TO)(A)
293	SHLD	BM30B-SHLDS-G-TFT(TO)(A)
294	SHLD	BM20(30-A1B-SHLDSGTFTTO;-
295	SHLD	BM20(30-A1B-SHLDSGTFTTO;-
296	SHLD	BM20(30-A1)BSHLDSGTFT(TO)(A
297	SHLD	BM30B-SHLDS-GI-TFT(LFSN;-
298	SHLD2	BM30B-SHLDS-GD-TFT(LF)(SN
299	SHLD	BM30B-SHLDS-GAN-CTTFC(H(E
300	SHLD	BM40B-SHLDS-G-TFT(LF)(SN;-
301	SHLD	BM40B-SHLDS-G-L-TFTLFSN;-
302	SHLD	BM40B-SHLDS-G-TFTLFSNTO;-
303	SHLD	BM40B-SHLDS-G-TFLFSNTO;-
304	SHLD	BM40B-SHLDS-G-TFT(LF)(SN(A
305	SHLD	BM40B-SHLDS-G-TF(TO)(A)
306	SHLD	BM50B-SHLDS-G-TFT(LF)(SN;-
307	SHLD	BM50B-SHLDS-G-L-TFTLFSN;-
308	SHLD	BM50B-SHLDS-G-TFTLFSNTO;-
309	SHLD	BM50B-SHLDS-G-TFLFSNTO;-
310	SHLD	BM50B-SHLDS-G-TFT(LF)(SN(A
311	SHLD	BM50B-SHLDS-G-TF(TO)(A)
312	SHLD	BM50B-SHLDS-GD-TFT(LF)(SN
313	SHLD	BM50B-SHLDS-GAN-TFCHLFSN;
314	SHLD	BM50B-SHLDS-GAN-TFC(H(A
315	SHLD	BM50B-SHLDS-GAN-CT-TFC(H)
316	SHLD	BM50B-SHLDS-GANCTTFCH(E(A
317	SHLD	BM50B-SHLDS-GAN-CTTFC(H(E
318	SHLD	BM50B-SHLDS-GAN-TFCHLFSN;
319	SHLD	BM50B-SHLDS-GAN-TFC(H(A
320	SHLD	BM50B-SHLDS-GAN-CT-TFC(H)
321	SHLD	BM50B-SHLDS-GANCTTFCH(E(A
322	SHLD	BM50B-SHLDS-GAN-CTTFC(H(E
323	SHLD	SM20B-SHLDS-G-TF(LF)(SN;-
324	SHLD	SM20B-SHLDS-GW-TF(LF)(SN;-
325	SHLD	SM20B-SHLDS-G-TF(LF)(SNC;-
326	SHLD	SM20B-SHLDS-GANF1TFLFSN;-
327	SHLD	SM20B-SHLDS-GC-TF(LF)(SN
328	SHLD	SM30B-SHLDS-G-TF(LF)(SN);
329	SHLD	SM30B-SHLDS-G-TF(LF)(SN;-
330	SHLD	SM30B-SHLDS-G-TF(LF)(SN(C;
331	SHLD	SM30B-SHLDS-G-TF(LFSN(C;-
332	SHLD	SM30B-SHLDS-TF(LF)(SN);-
333	SHLD	SM30B-SHLDS-G-TF(LFSN(TO;
334	SHLD	SM30B-SHLDS-G-TF(LFSNTO;-
335	SHLD	SM20(30-A1)B-SHLDSGTFT(TO;
336	SHLD	SM30B-SHLDS-GANF-1TFLFSN;

**G21-05870 Appendix Target products**

No.	Series	Part Number
337	SHLD2	SM30B-SHLD2S-GC-TF(LF)(SN
338	SHLD	SM40B-SHLDS-G-TF(LF)(SN);
339	SHLD	SM40B-SHLDS-G-TF(LF)(SN;-
340	SHLD	SM40B-SHLDS-GI-TF(LF(SN;-
341	SHLD	SM40B-SHLDS-G-1-TF(LF(SN;
342	SHLD	SM40B-SHLDS-GANF-1TFLFSN;
343	SHLD2	SM40B-SHLD2S-GC-TF(LF)(SN
344	SHLD	SM50B-SHLDS-G-TF(LF)(SN);
345	SHLD	SM50B-SHLDS-G-TF(LF)(SN;-
346	SHLD	SM50B-SHLDS-G-TF(LFSN(TO;
347	SHLD	SM50B-SHLDS-G-TF(LFSNTO;-
348	SHLD	SM50B-SHLDS-GANF-1TFLFSN;
349	SHLD2	SM50B-SHLD2S-GC-TF(LF)(SN
350	GH	BM02B-GHS-TB (LF)(SN);-
351	GH	BM02B-GHS-TB(LF)(SN)(A
352	GH	BM02B-GHS-TBT(LF)(SN)(N(A
353	GH	SM02B-GHS-GB-TB(LF)(SN);-
354	GH	SM02B-GHS-TB (LF)(SN);-
355	GH	SM02B-GHS-TB (LF)(SN)(A
356	GH	SM02B-GHS-TB(D)(LF)(SN);-
357	GH	BM03B-GHS-GB-TB(LF)(SN);-
358	GH	BM03B-GHS-GB-TB(LF)(SN)(A
359	GH	BM03B-GHS-TB (LF)(SN);-
360	GH	BM03B-GHS-TB(LF)(SN)(A
361	GH	BM03B-GHS-TBT(LF)(SN)(N(A
362	GH	BM03B-GHS-GD-TBT(LFSN(N;-
363	GH	BM03B-GHS-GZAN-TBTLFSNN;-
364	GH2	BM03B-GH2S-GD-TB
365	GH	SM03B-GHS-GB-TB(LF)(SN);-
366	GH	SM03B-GHS-TB (LF)(SN);-
367	GH	SM03B-GHS-TB (LF)(SN)(A
368	GH	SM03B-GHS-TB(D)(LF)(SN);-
369	GH	(Z)SM03B-GHS-TB(D)(LFSNK;-
370	GH	SM03B-GHS-GZAN-TB(LF(SN;-
371	GH	(Z)SM03B-GHS-TB(LF)(SN);-
372	GH	BM04B-GHS-GB-TB(LF)(SN);-
373	GH	BM04B-GHS-TB (LF)(SN);-
374	GH	BM04B-GHS-TB(LF)(SN)(A
375	GH	BM04B-GHS-GJ-TBT(LFSN(N;-
376	GH	BM04B-GHS-TBT(LF)(SN)(N(A
377	GH	BM04B-GH2S-GD-TB
378	GH	SM04B-GHS-GB-TB(LF)(SN);-
379	GH	SM04B-GHS-TB (LF)(SN);-
380	GH	SM04B-GHS-TB (LF)(SN)(A
381	GH	SM04B-GHS-GD-TB(LF)(SN);-
382	GH	SM04B-GHS-GD-TB(LF)(SN)(A
383	GH	BM05B-GHS-TB (LF)(SN);-
384	GH	BM05B-GHS-TB(LF)(SN)(A
385	GH	BM05B-GHS-TBT(LF)(SN)(N(A
386	GH	BM05B-GHS-GD-TBT(LFSN(N;-
387	GH	BM3(2.5)B-GHS-TBT(LFSNN;-
388	GH	SM05B-GHS-GB-TB(LF)(SN);-
389	GH	SM05B-GHS-TB (LF)(SN);-
390	GH	SM05B-GHS-TB (LF)(SN)(A
391	GH	SM05B-GHS-GD-TB(LF)(SN);-
392	GH	SM05B-GHS-GD-TB(LF)(SN)(A



**G21-05870 Appendix Target products**

No.	Series	Part Number
393	GH2	SM05B-GH2S-GD-TB
394	GH	BM04(6-2.3)B-GHS-GB-TB(LF
395	GH	BM06B-GHS-TB (LF)(SN);-
396	GH	BM06B-GHS-TB(LF)(SN)(A)
397	GH	BM06B-GHS-TBT(LF)(SN(N);-
398	GH	BM06B-GHS-TBT(LF)(SN)(N(A
399	GH	BM06B-GHS-GD-TBT(LFSN(N);-
400	GH	BM06B-GHS-GD-TBT(LFSN(N(A
401	GH	SM06B-GHS-GB-TB(LF)(SN);-
402	GH	SM06B-GHS-GZAN-TB(LF(SN);-
403	GH	SM06B-GHS-TB (LF)(SN);-
404	GH	SM06B-GHS-TB (LF)(SN)(A)
405	GH	BM07B-GHS-GB-TBT(LFSN(N);-
406	GH	BM07B-GHS-GB-TBT(LFSN(N(A
407	GH	BM07B-GHS-TB (LF)(SN);-
408	GH	BM07B-GHS-TB(LF)(SN)(A)
409	GH	BM07B-GHS-TBT(LF)(SN)(N(A
410	GH	SM07B-GHS-GB-TB(LF)(SN);-
411	GH	SM07B-GHS-TB (LF)(SN);-
412	GH	SM07B-GHS-TB (LF)(SN)(A)
413	GH	BM08B-GHS-GB-TB(LF)(SN);-
414	GH	BM08B-GHS-GB-TBT(LFSN(N);-
415	GH	BM08B-GHS-TB (LF)(SN);-
416	GH	BM08B-GHS-TB(LF)(SN)(A)
417	GH	BM08B-GHS-TBT(LF)(SN(N);-
418	GH	BM08B-GHS-TBT(LF)(SN)(N(A
419	GH	BM04(8-2356)B-GHS-TBT(N);-
420	GH	BM08B-GHS-G-TBT(LF)(SN(N);-
421	GH	SM08B-GHS-GB-TB(LF)(SN);-
422	GH	SM08B-GHS-GJ-TB(LF)(SN);-
423	GH	SM08B-GHS-TB (LF)(SN);-
424	GH	SM08B-GHS-TB (LF)(SN)(A)
425	GH	SM08B-GHS-GD-TB(LF)(SN);-
426	GH	SM08B-GHS-GD-TB(LF)(SN)(A)
427	GH	BM09B-GHS-TBT(LF)(SN(N);-
428	GH	BM09B-GHS-G-TBT(LF)(SN(N);-
429	GH	SM09B-GHS-GB-TB(LF)(SN);-
430	GH	SM09B-GHS-TB (LF)(SN);-
431	GH	SM09B-GHS-TB (LF)(SN)(A)
432	GH	BM10B-GHS-GB-TBT(LFSN(N(A
433	GH	BM10B-GHS-TBT(LF)(SN(N);-
434	GH	BM10B-GHS-TBT(LF)(SN)(N(A
435	GH	BM10B-GHS-GD-TBT(LFSN(N);-
436	GH	SM10B-GHS-GB-TB(LF)(SN);-
437	GH	SM10B-GHS-GJ-TB(LF)(SN);-
438	GH	SM10B-GHS-TB (LF)(SN);-
439	GH	SM10B-GHS-TB (LF)(SN)(A)
440	GH	BM11B-GHS-GB-TBT(LFSN(N);-
441	GH	BM11B-GHS-TBT(LF)(SN(N);-
442	GH	SM11B-GHS-GB-TB(LF)(SN);-
443	GH	SM11B-GHS-TB (LF)(SN);-
444	GH	SM11B-GHS-TB (LF)(SN)(A)
445	GH	BM12B-GHS-TBT(LF)(SN(N);-
446	GH	BM12B-GHS-TBT(LF)(SN)(N(A
447	GH	BM12B-GHS-G-TBT(LF)(SN(N);-
448	GH	SM12B-GHS-GB-TB(LF)(SN);-

**G21-05870 Appendix Target products**

No.	Series	Part Number
449	GH	SM12B-GHS-GJ-TB(LF)(SN);-
450	GH	SM12B-GHS-TB (LF)(SN);-
451	GH	SM12B-GHS-TB (LF)(SN)(A)
452	GH	BM13B-GHS-TB (LF)(SN);-
453	GH	BM13B-GHS-TB(LF)(SN)(A)
454	GH	BM13B-GHS-TBT(LF)(SN(N);-
455	GH	BM13B-GHS-TBT(LF)(SN)(N(A
456	GH	BM13B-GHS-GD-TBT(LFSN(N);-
457	GH	SM13B-GHS-GB-TB(LF)(SN);-
458	GH	SM13B-GHS-TB (LF)(SN);-
459	GH	SM13B-GHS-TB (LF)(SN)(A)
460	GH	SM13B-GHS-GD-TB(LF)(SN);-
461	GH	SM13B-GHS-GD-TB(LF)(SN)(A
462	GH	BM14B-GHS-GB-TB (LF)(SN);
463	GH	BM14B-GHS-GB-TBT(LFSN(N);-
464	GH	BM14B-GHS-TB (LF)(SN);-
465	GH	BM14B-GHS-TBT(LF)(SN(N);-
466	GH	BM14B-GHS-TBT(LF)(SN)(N(A
467	GH	SM14B-GHS-GB-TB(LF)(SN);-
468	GH	SM14B-GHS-TB (LF)(SN);-
469	GH	SM14B-GHS-TB (LF)(SN)(A)
470	GH	BM15B-GHS-GB-TBT(LFSN(N);-
471	GH	BM15B-GHS-TBT(LF)(SN(N);-
472	GH	BM15B-GHS-TBT(LF)(SN)(N(A
473	GH	SM15B-GHS-GB-TB(LF)(SN);-
474	GH	SM15B-GHS-TB (LF)(SN);-
475	GH	SM15B-GHS-TB (LF)(SN)(A)
476	SHLV	BM21B-SHLVS-G-TBT(LF)(SN;
477	SHLV	SM21B-SHLVS-G-TB (LF)(SN;
478	NSHD	BM16B-NSHDZS-TFT
479	NSHD	BM20B-NSHDZS-TFT
480	NSHD	BM20B-NSHDZS-GAN-TFT
481	NSHD	BM24B-NSHDZS-TFT
482	NSHD	BM28B-NSHDZS-TFT
483	NSHD	BM28B-NSHDZS-GAN-TFT
484	NSHD	BM40B-NSHDZS-1-TFT
485	CIF	CIF-HS08SS-072-TB (LF)
486	NSHD	SM16B-NSHDZS-TF
487	NSHD	SM20B-NSHDZS-TF
488	NSHD	SM24B-NSHDZS-TF
489	NSHD	SM28B-NSHDZS-TF
490	ZND	BM04B-ZNDSS-A-TF
491	ZND	BM06B-ZNDSS-A-TF
492	ZND	BM06B-ZNDSS-A-SEQ-TF
493	ZND	BM08B-ZNDSS-A-TF
494	ZND	BM08B-ZNDSS-A-SEQ-TF
495	ZND	BM10B-ZNDSS-A-TF
496	ZND	BM10B-ZNDSS-A-SEQ-TF
497	ZND	BM12B-ZNDSS-A-TF
498	ZND	BM14B-ZNDSS-A-TF
499	ZND	BM14B-ZNDSS-A-SEQ-TF
500	ZND	BM16B-ZNDSS-A-TF
501	ZND	BM18B-ZNDSS-A-TF
502	ZND	BM20B-ZNDSS-A-TF
503	ZND	BM22B-ZNDSS-A-TF
504	ZND	BM24B-ZNDSS-A-TF

**G21-05870 Appendix Target products**

No.	Series	Part Number
505	ZND	BM26B-ZNDSS-A-TF
506	ZND	BM28B-ZNDSS-A-TF
507	ZND	BM30B-ZNDSS-A-TF
508	ZND	BM32B-ZNDSS-A-TF
509	ZND	BM34B-ZNDSS-A-TF
510	ZND	BM36B-ZNDSS-A-TF
511	ZND	BM40B-ZNDSS-A-SEQ-TF
512	SHLD	BM30B-SHLDZS-GAN-CTTFC(H/E
513	NSHD	BM32B-NSHDZS-1-TFT
514	NSHD	SM32B-NSHDZS-1-TF
515	NSHD	SM40B-NSHDZS-1-TF
516	GH	BM04(6-2.3)B-GHS-GB-TB(LF
517	GH	BM06B-GHS-TB (LF)(SN);-
518	GH	BM06B-GHS-TB(LF)(SN)(A
519	GH	BM06B-GHS-TBT(LF)(SN(N;-
520	GH	BM06B-GHS-TBT(LF)(SN)(N(A
521	GH	BM06B-GHS-GD-TBT(LFSN(N;-
522	GH	BM06B-GHS-GD-TBT(LFSN(N(A
523	GH	SM06B-GHS-GB-TB(LF)(SN);-
524	GH	SM06B-GHS-GZAN-TB(LF(SN;-
525	GH	SM06B-GHS-TB (LF)(SN);-
526	GH	SM06B-GHS-TB (LF)(SN)(A
527	GH	BM07B-GHS-GB-TBT(LFSN(N;-
528	GH	BM07B-GHS-GB-TBT(LFSN(N(A
529	GH	BM07B-GHS-TB (LF)(SN);-
530	GH	BM07B-GHS-TB(LF)(SN)(A
531	GH	BM07B-GHS-TBT(LF)(SN)(N(A
532	GH	SM07B-GHS-GB-TB(LF)(SN);-
533	GH	SM07B-GHS-TB (LF)(SN);-
534	GH	SM07B-GHS-TB (LF)(SN)(A
535	GH	BM08B-GHS-GB-TB(LF)(SN);-
536	GH	BM08B-GHS-GB-TBT(LFSN(N;-
537	GH	BM08B-GHS-TB (LF)(SN);-
538	GH	BM08B-GHS-TB(LF)(SN)(A
539	GH	BM08B-GHS-TBT(LF)(SN(N;-
540	GH	BM08B-GHS-TBT(LF)(SN)(N(A
541	GH	BM04(8-2356)B-GHS-TBT(N;-
542	GH	BM08B-GHS-G-TBT(LF(SN(N;-
543	GH	SM08B-GHS-GB-TB(LF)(SN);-
544	GH	SM08B-GHS-GJ-TB(LF)(SN);-
545	GH	SM08B-GHS-TB (LF)(SN);-
546	GH	SM08B-GHS-TB (LF)(SN)(A
547	GH	SM08B-GHS-GD-TB(LF)(SN);-
548	GH	SM08B-GHS-GD-TB(LF)(SN)(A
549	GH	BM09B-GHS-TBT(LF)(SN(N;-
550	GH	BM09B-GHS-G-TBT(LF(SN(N;-
551	GH	SM09B-GHS-GB-TB(LF)(SN);-
552	GH	SM09B-GHS-TB (LF)(SN);-
553	GH	SM09B-GHS-TB (LF)(SN)(A
554	GH	BM10B-GHS-GB-TBT(LFSN(N(A
555	GH	BM10B-GHS-TBT(LF)(SN(N;-
556	GH	BM10B-GHS-TBT(LF)(SN)(N(A
557	GH	BM10B-GHS-GD-TBT(LFSN(N;-
558	GH	SM10B-GHS-GB-TB(LF)(SN);-
559	GH	SM10B-GHS-GJ-TB(LF)(SN);-
560	GH	SM10B-GHS-TB (LF)(SN);-

**G21-05870 Appendix Target products**

No.	Series	Part Number
561	GH	SM10B-GHS-TB (LF)(SN)(A)
562	GH	BM11B-GHS-GB-TBT(LFSN(N;-
563	GH	BM11B-GHS-TBT(LF)(SN(N;-
564	GH	SM11B-GHS-GB-TB(LF)(SN);-
565	GH	SM11B-GHS-TB (LF)(SN);-
566	GH	SM11B-GHS-TB (LF)(SN)(A)
567	GH	BM12B-GHS-TBT(LF)(SN(N;-
568	GH	BM12B-GHS-TBT(LF)(SN)(N(A
569	GH	BM12B-GHS-G-TBT(LF)(SN(N;-
570	GH	SM12B-GHS-GB-TB(LF)(SN);-
571	GH	SM12B-GHS-GJ-TB(LF)(SN);-
572	GH	SM12B-GHS-TB (LF)(SN);-
573	GH	SM12B-GHS-TB (LF)(SN)(A)
574	GH	BM13B-GHS-TB (LF)(SN);-
575	GH	BM13B-GHS-TB(LF)(SN)(A)
576	GH	BM13B-GHS-TBT(LF)(SN(N;-
577	GH	BM13B-GHS-TBT(LF)(SN)(N(A
578	GH	BM13B-GHS-GD-TBT(LFSN(N;-
579	GH	SM13B-GHS-GB-TB(LF)(SN);-
580	GH	SM13B-GHS-TB (LF)(SN);-
581	GH	SM13B-GHS-TB (LF)(SN)(A)
582	GH	SM13B-GHS-GD-TB(LF)(SN);-
583	GH	SM13B-GHS-GD-TB(LF)(SN)(A)
584	GH	BM14B-GHS-GB-TB (LF)(SN);
585	GH	BM14B-GHS-GB-TBT(LFSN(N;-
586	GH	BM14B-GHS-TB (LF)(SN);-
587	GH	BM14B-GHS-TBT(LF)(SN(N;-
588	GH	BM14B-GHS-TBT(LF)(SN)(N(A
589	GH	SM14B-GHS-GB-TB(LF)(SN);-
590	GH	SM14B-GHS-TB (LF)(SN);-
591	GH	SM14B-GHS-TB (LF)(SN)(A)
592	GH	BM15B-GHS-GB-TBT(LFSN(N;-
593	GH	BM15B-GHS-TBT(LF)(SN(N;-
594	GH	BM15B-GHS-TBT(LF)(SN)(N(A
595	GH	SM15B-GHS-GB-TB(LF)(SN);-
596	GH	SM15B-GHS-TB (LF)(SN);-
597	GH	SM15B-GHS-TB (LF)(SN)(A)
598	SHLV	BM31B-SHLVS-G-TBT(LF)(SN);
599	SHLV	SM31B-SHLVS-G-TB(LF)(SN);
600	CPT	BM02B-CPTK-1A-TB
601	CPT	BM08B-CPTK-1A-TB
602	CPT	BM12B-CPTK-1A-TB
603	1.25FJX	(D)15R-1.25FJX-SM-TF (LF)(SN)
604	1.25FJX	(D)23R-1.25FJX-SM-TF (LF)(SN)
605	SHLD	(D)BM20B-SHLDS-G-TFT (LF)(SN);-
606	GH	(D)BM02B-GHS-TB (LF)(SN)
607	GH	(D)BM02B-GHS-TB(LF)(SN)(A)
608	GH	(D)BM02B-GHS-TBT(LFSN(N(A
609	GH	(D)BM02B-GHS-GB-TBTLFSN(N
610	GH	(D)BM02B-GHS-TBT(LF)(SN)(N
611	GH	(D)SM02B-GHS-TB (LF)(SN);-
612	GH	(D)SM02B-GHS-GB-TB(LFSN;-
613	GH	(D)BM03B-GHS-TB (LF)(SN)
614	GH	(D)BM03B-GHS-TB(LF)(SN)(A)
615	GH	(D)BM03B-GHS-TBT(LFSN(N(A
616	GH	(D)BM03B-GHS-GB-TBTLFSN(N
617	GH	(D)BM03B-GHS-GB-TB(LF)(SN

**G21-05870 Appendix Target products**

No.	Series	Part Number
618	GH	(D)BM03B-GHS-GB-TB(LFSN(A
619	GH	(D)BM03B-GHS-GD-TBTLFSN(N
620	GH	(D)BM03B-GHS-GZANTBTLFSNN
621	GH	(D)BM03B-GH2S-GD-TB
622	GH	(D)BM03B-GHS-TBT(LF)(SN(N
623	GH	(D)SM03B-GHS-TB (LF)(SN;-
624	GH	(D)BM04B-GHS-TB (LF)(SN)
625	GH	(D)BM04-GHS-TB(LF)(SN)(A)
626	GH	(D)BM04B-GHS-TBT(LFSN(N(A
627	GH	(D)BM04B-GHS-TBT (LF)(SN)
628	GH	(D)BM04B-GHS-GB-TB(LF)(SN
629	GH	(D)BM04B-GHS-GB-TBTLFSN(N
630	GH	(D)BM04B-GHS-GJTBT(LFSN(N
631	GH2	(D)BM04B-GH2S-GD-TB
632	GH	(D)BM04B-GHS-TBT(LF)(SN(N
633	GH	(D)SM04B-GHS-TB (LF)(SN;-
634	GH	(D)BM05B-GHS-TB (LF)(SN)
635	GH	(D)BM05B-GHS-TB(LF)(SN)(A)
636	GH	(D)BM05B-GHS-TBT(LFSN(N(A
637	GH	(D)BM05B-GHS-GB-TBTLFSN(N
638	GH	(D)BM05B-GHS-GD-TBTLFSN(N
639	GH	(D)BM03(2.5B-GHSTBTLFSN(N
640	GH	(D)BM05B-GHS-TBT(LF)(SN(N
641	GH	(D)SM05B-GHS-TB(LF)(SN);-
642	GH	(D)SM05B-GHS-GB-TB(LFSN;-
643	GH	(D)BM06B-GHS-TB (LF)(SN)
644	GH	(D)BM06B-GHS-TB(LF)(SN)(A)
645	GH	(D)BM06B-GHS-TBT(LFSN(N(A
646	GH	(D)BM04(6-2.3B-GHSGBTB(LF
647	GH	(D)BM06B-GHS-GB-TBTLFSN(N
648	GH	(D)BM06B-GHS-GD-TBTLFSN(N
649	GH	(D)BM06B-GHSGDTBTLFSN(N(A
650	GH	(D)BM06B-GHS-TBT(LF)(SN(N
651	GH	(D)SM06B-GHS-TB (LF)(SN;-
652	GH	(D)SM06B-GHS-GB-TB(LFSN;-
653	GH	(D)BM07B-GHS-TB (LF)(SN)
654	GH	(D)BM07B-GHS-TB(LF)(SN)(A)
655	GH	(D)BM07B-GHS-TBT(LFSN(N(A
656	GH	(D)BM07B-GHS-GB-TBTLFSN(N
657	GH	(D)BM07B-GHSGBTBTLFSN(N(A
658	GH	(D)BM07B-GHS-TBT(LF)(SN(N
659	GH	(D)BM07B-GHS-TBT (D)(LF)SN(N;-
660	GH	(D)SM07B-GHS-TB (LF)(SN;-
661	GH	(D)BM08B-GHS-TB (LF)(SN)
662	GH	(D)BM08B-GHS-TB(LF)(SN)(A)
663	GH	(D)BM08B-GHS-TBT(LFSN(N(A
664	GH	(D)BM08B-GHS-GB-TBTLFSN(N
665	GH	(D)BM08B-GHS-GB-TB(LF)(SN
666	GH	(D)BM04(8-2356B-GHS-TBT(N
667	GH	(D)BM08B-GHS-G-TBT(LFSN(N
668	GH	(D)BM08B-GHS-TBT(LF)(SN(N
669	GH	(D)SM08B-GHS-TB (LF)(SN;-
670	GH	(D)SM08B-GHS-GB-TB(LFSN;-
671	GH	(D)BM09B-GHS-GB-TBTLFSN(N
672	GH	(D)BM09B-GHS-G-TBT(LFSN(N
673	GH	(D)BM09B-GHS-TBT(LF)(SN(N
674	GH	(D)SM09B-GHS-TB (LF)(SN;-
675	GH	(D)BM10B-GHS-TBT(LFSN(N(A
676	GH	(D)BM10B-GHSGBTBTLFSN(N(A
677	GH	(D)BM10B-GHS-GD-TBTLFSN(N

**G21-05870 Appendix Target products**

No.	Series	Part Number
678	GH	(D)BM10B-GHS-TBT(LF)(SN(N
679	GH	(D)SM10B-GHS-TB (LF(SN;-
680	GH	(D)BM10B-GHS-GB-TBTLFSN(N
681	GH	(D)BM11B-GHS-GB-TBTLFSN(N
682	GH	(D)BM11B-GHS-TBT(LF)(SN(N
683	GH	(D)SM11B-GHS-TB (LF(SN;-
684	GH	(D)BM12B-GHS-TBT(LFSN(N(A
685	GH	(D)BM12B-GHS-GB-TBTLFSN(N
686	GH	(D)BM12B-GHS-G-TBT(LFSN(N
687	GH	(D)BM12B-GHS-TBT(LF)(SN(N
688	GH	(D)SM12B-GHS-TB (LF(SN;-
689	GH	(D)BM13B-GHS-TB (LF)(SN)
690	GH	(D)BM13B-GHS-TB(LF(SN)(A)
691	GH	(D)BM13B-GHS-TBT(LFSN(N(A
692	GH	(D)BM13B-GHS-GB-TBTLFSN(N
693	GH	(D)BM13B-GHS-GD-TBTLFSN(N
694	GH	(D)BM13B-GHS-TBT(LF)(SN(N
695	GH	(D)SM13B-GHS-TB (LF(SN;-
696	GH	(D)BM14B-GHS-TB (LF)(SN)
697	GH	(D)BM14B-GHS-TBT(LFSN(N(A
698	GH	(D)BM14B-GHS-GB-TBTLFSN(N
699	GH	(D)BM14B-GHS-GB-TB(LF)(SN
700	GH	(D)BM14B-GHS-TBT(LF)(SN(N
701	GH	(D)SM14B-GHS-TB (LF(SN;-
702	GH	(D)BM15B-GHS-TBT(LFSN(N(A
703	GH	(D)BM15B-GHS-GB-TBTLFSN(N
704	GH	(D)BM15B-GHS-TBT(LF)(SN(N
705	GH	(D)SM15B-GHS-TB (LF(SN;-
706	SHLD	(D)BM30B-SHLDS-G-TFT (LF(SN;-
707	SHLD	(D)SM40B-SHLDSGANF1TFLFSN;