



520 Park East Blvd., New Albany, IN 47150 U.S.A
(812)-944-6733 / 1-800-SAMTEC9

Product Change Notification

1. ECR #: 163176
Notification #: 327

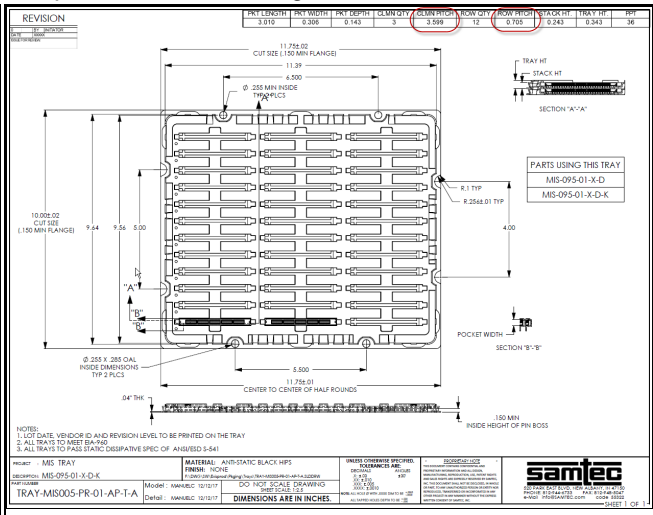
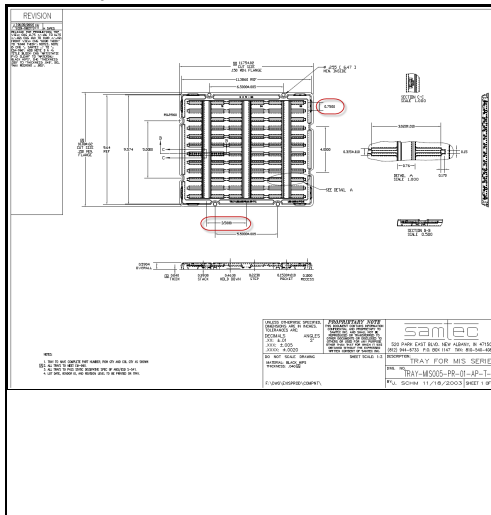
2. Date of Announcement: May 09, 2018

3. Series:
• MIS - .635mm DOUBLE ROW HS TERMINAL ASSEMBLY

4. Part #'s Affected
• MIS-095-01-X-D-K

5. Description of Change:
Matrix design tray has been modified

6. Method of Identifying Change
Column pitch has been modified from 3.500" to 3.599"; Row pitch has been changed from .750" to .705"



7. Reason for Change:
Changes are being made to improve the manufacturability

8. Impact of Change on Form, Fit, or Function:
• Form - Matrix change

9. Projected Implementation Date: June 24, 2018

Disclaimer

Please review the change notification details listed above for specific information regarding the nature and timing of the change. While Samtec has taken precautions to ensure this change is not detrimental to your application, each application can be unique and therefore customers should consider the effect of the change on their specific application.

Samtec has taken efforts to ensure that all users of this product who have requested change notifications have been informed. However, you should assume that this is the only notification that will be sent and you, as the recipient, must determine how to communicate this information to your organization(s) and customer(s) as appropriate. If you wish to opt out of receiving Samtec Engineering Change Notification emails, please contact CustomerECN@samtec.com. Due to technical progress, specifications are subject to change without notification and it is recommended to provide an alternative contact when opting out.

Please contact Samtec at CustomerECN@samtec.com for any questions related to this change.