



520 Park East Blvd., New Albany, IN 47150 U.S.A  
(812)-944-6733 / 1-800-SAMTEC9

## Product Change Notification

**1. ECR #:** 160382  
**Notification #:** 313

**2. Date of Announcement:** November 02, 2017

**3. Series:**

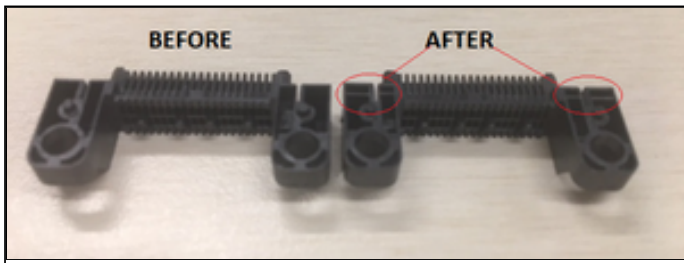
- ERM8 - .8MM EDGE RATE TERMINAL ASSEMBLY

**4. Part #'s Affected**

- ASP-196446-01-B
- ERM8-RA

**5. Description of Change:**  
Form Change: Plastic ribs added to bottom of part. This change does not influence fit or function. The part has plastic ribs added on the voids on the bottom that are visible with the unaided eye.

**6. Method of Identifying Change**  
Plastic ribs were added to the bottom of the connector that are visible with the unaided eye.



**7. Reason for Change:**  
This change was made to improve Samtec weld-tab location capability

**8. Impact of Change on Form, Fit, or Function:**

- Form - Visual change to bottom of part. This will not be visible after soldering.

**9. Projected Implementation Date:** January 01, 2018

**Disclaimer**

Please review the change notification details listed above for specific information regarding the nature and timing of the change. While Samtec has taken precautions to ensure this change is not detrimental to your application, each application can be unique and therefore customers should consider the effect of the change on their specific application.

Samtec has taken efforts to ensure that all users of this product who have requested change notifications have been informed. However, you should assume that this is the only notification that will be sent and you, as the recipient, must determine how to communicate this information to your organization(s) and customer(s) as appropriate. If you wish to opt out of receiving Samtec Engineering Change Notification emails, please contact [CustomerECN@samtec.com](mailto:CustomerECN@samtec.com). Due to technical progress, specifications are subject to change without notification and it is recommended to provide an alternative contact when opting out.

Please contact Samtec at [CustomerECN@samtec.com](mailto:CustomerECN@samtec.com) for any questions related to this change.