



520 Park East Blvd., New Albany, IN 47150 U.S.A
(812)-944-6733 / 1-800-SAMTEC9

Product Change Notification

1. ECN #: 286396

2. Date of Announcement: November 14, 2016

3. Series:

- ERF5 - .5MM EDGE RATE SOCKET ASSEMBLY

4. Part #'s Affected

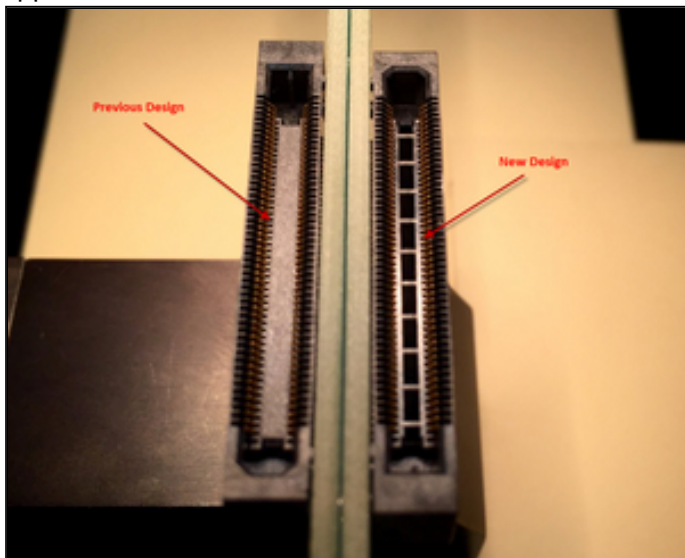
- ERF5-RA

5. Description of Change:

Voids are being added at the bottom of the mating inside the shroud of the insulator. This is a manufacturing improvement that will decrease bow located along the walls of the shroud in the mating area and improve dimensional capability in relation to processing.

6. Method of Identifying Change

New revision material will have voids located inside the mating area of the insulator that will be visible without magnification. These voids will not be present on old revision material. Once the new revision is approved and released, old revision insulators will be bonded and scrapped.



Old vs New Design

7. Reason for Change:

Improve manufacturability by reducing shroud bow.

8. Impact of Change on Form, Fit, or Function:

- Form - Visual difference at the bottom of the mating area inside of the insulator

9. Projected Implementation Date: December 13, 2016