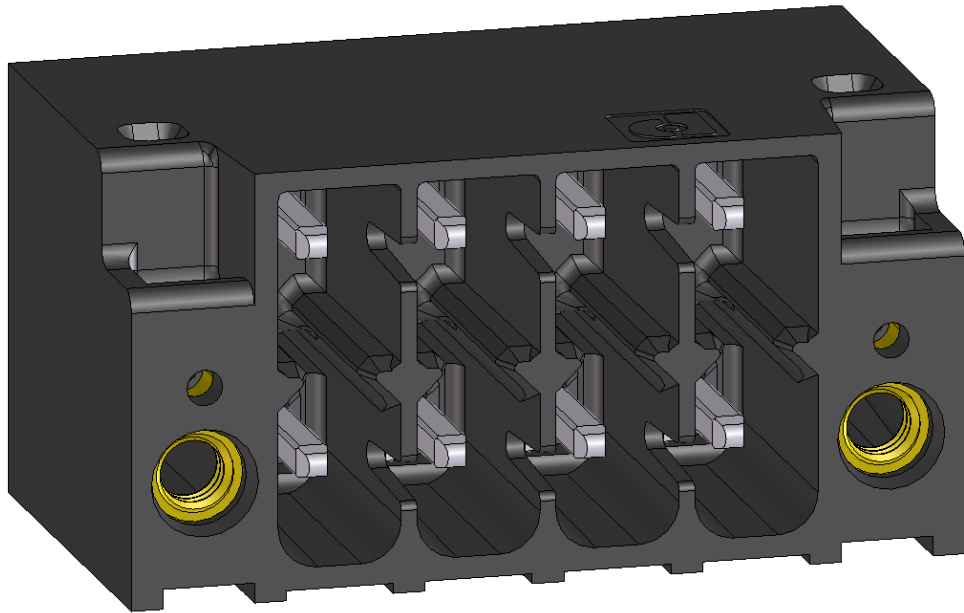


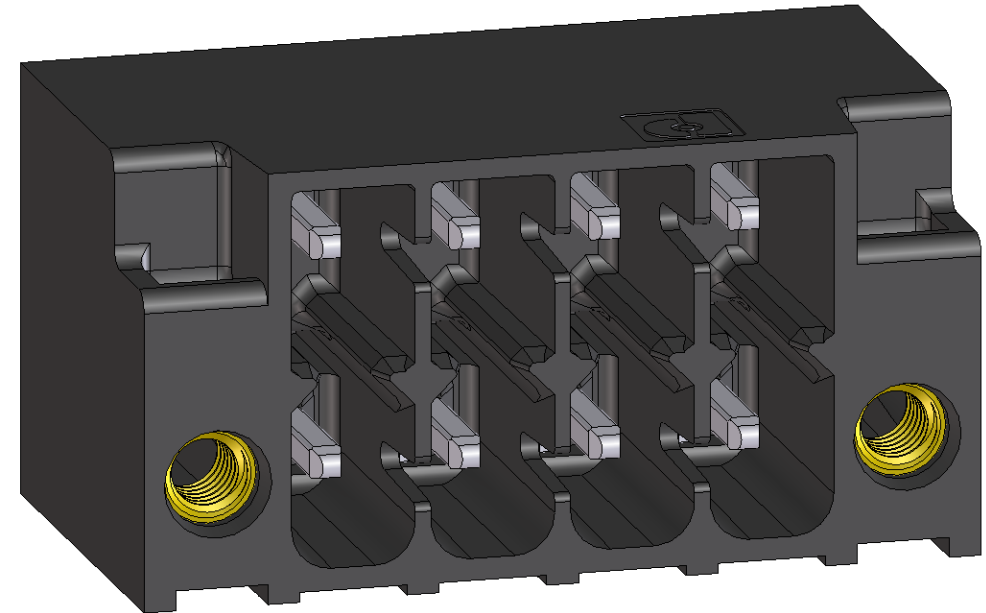
DMC(V) 1,5/..-G1F-THR

DMC 1,5/..-G1F-THR (horizontal version)

old flange



new flange



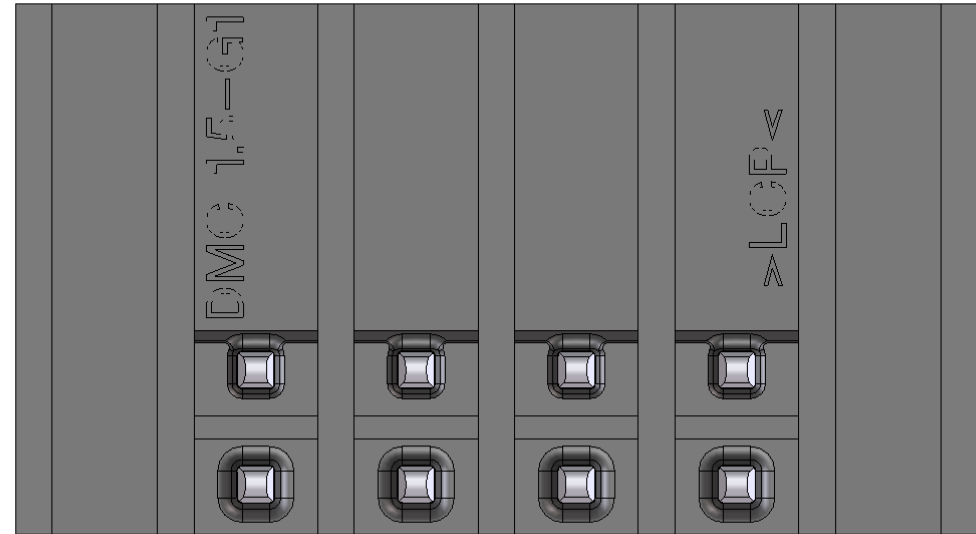
DMC(V) 1,5/..-G1F-THR Umstellung auf Gewindebuchse

DMC 1,5/..-G1F-THR (horizontal version; view soldering side)

old flange



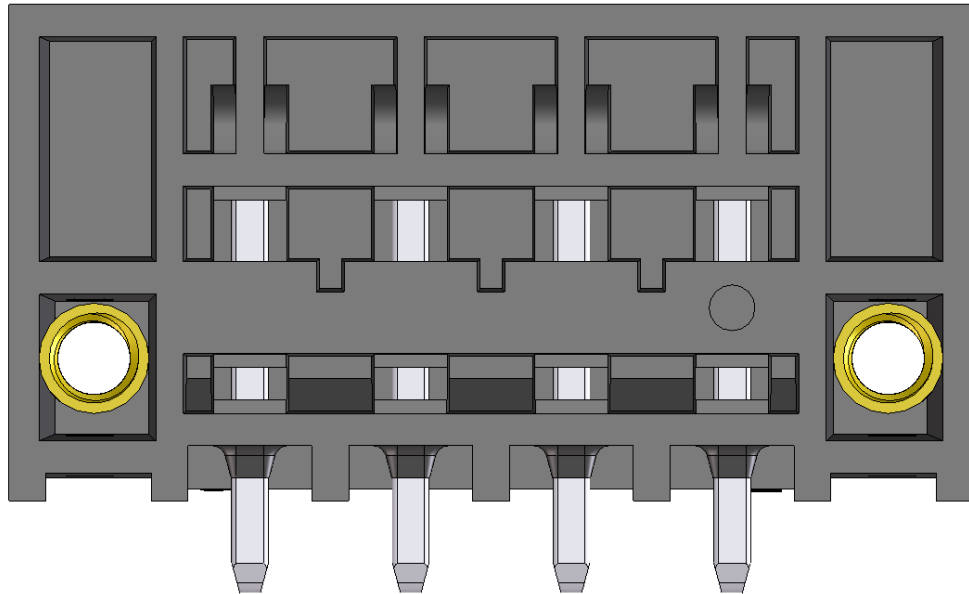
new flange



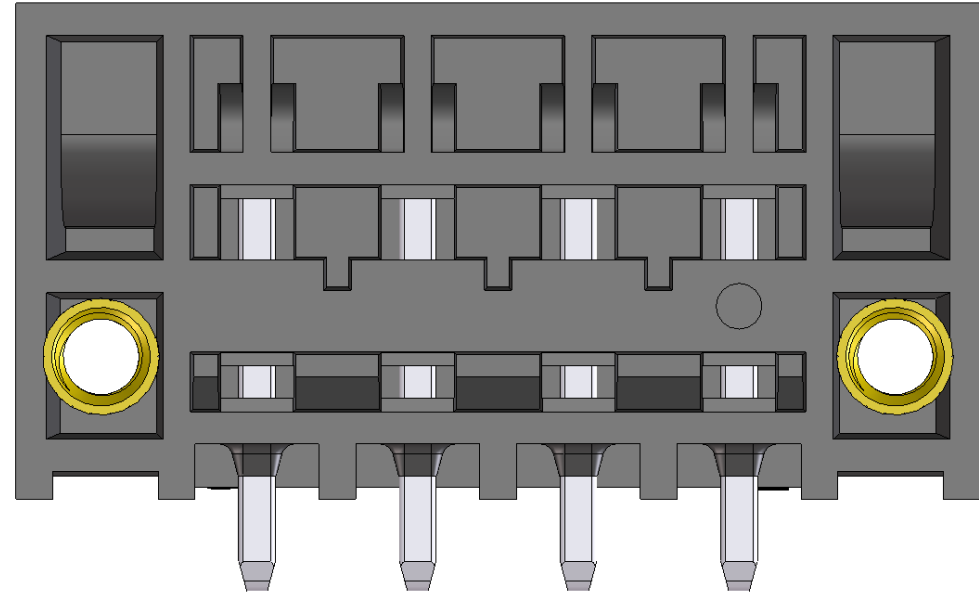
DMC(V) 1,5/..-G1F-THR Umstellung auf Gewindebuchse

DMC 1,5/..-G1F-THR (horizontal version; view from the back)

old flange



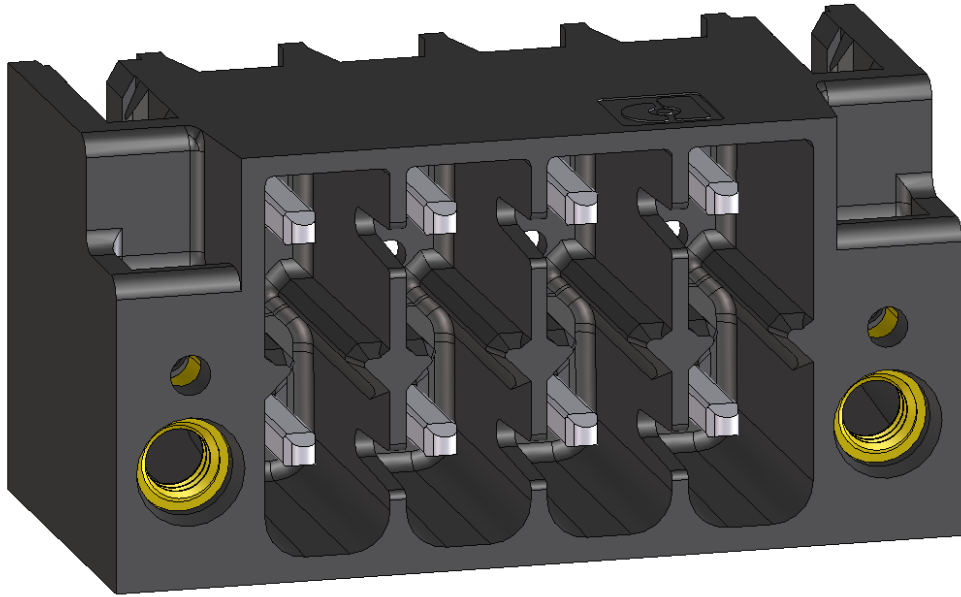
new flange



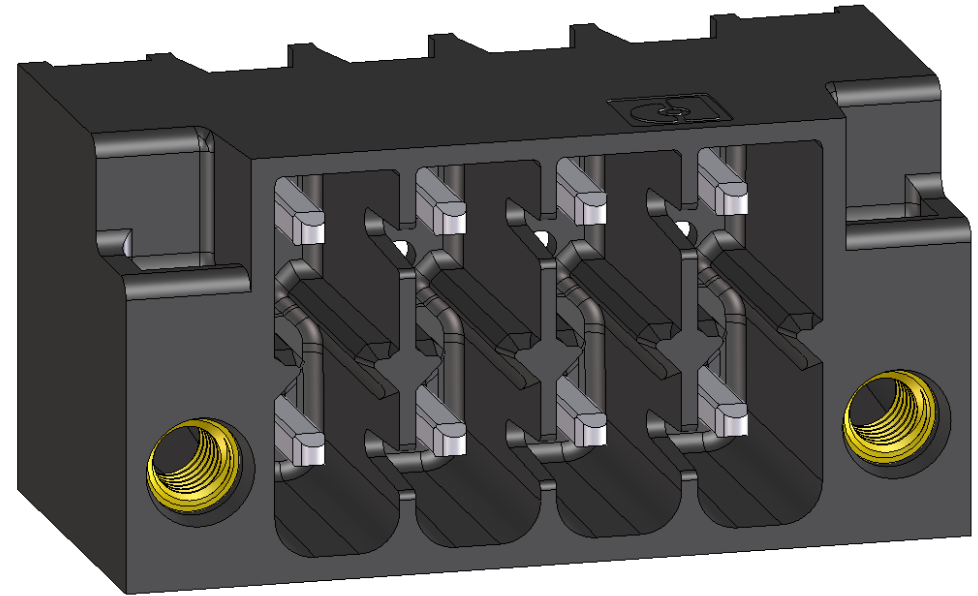
DMC(V) 1,5/..-G1F-THR

DMCV 1,5/..-G1F-THR (vertical version)

old flange



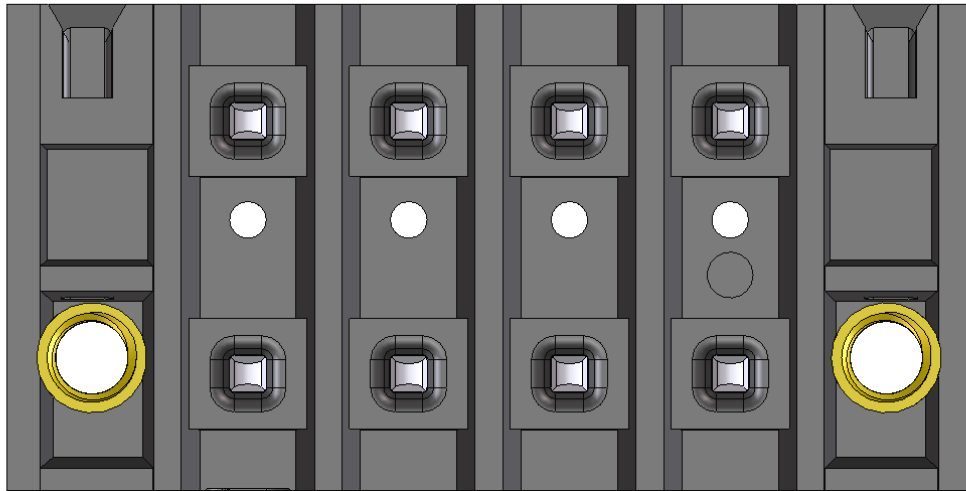
new flange



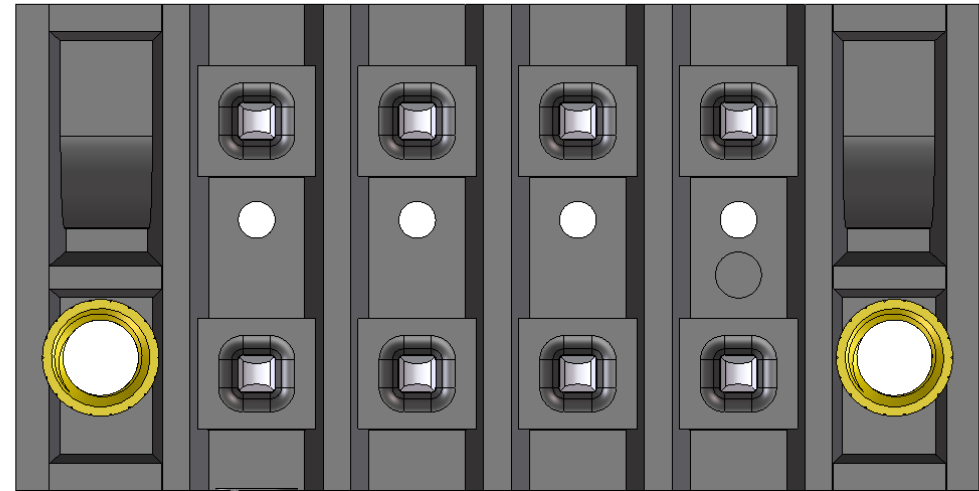
DMC(V) 1,5/..-G1F-THR

DMCV 1,5/..-G1F-THR (vertical version; view soldering side)

old flange



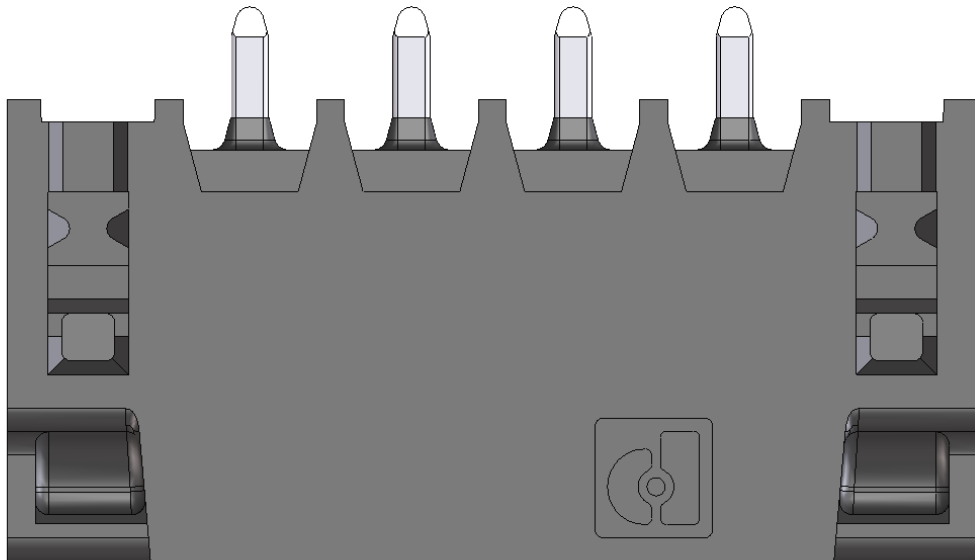
new flange



DMC(V) 1,5/..-G1F-THR

DMCV 1,5/..-G1F-THR (vertical version; top view)

old flange



new flange

