



## Notice of Discontinuation

**Company:** KYCON, Inc.  
305 Digital Dr.  
Morgan Hill, CA 95037  
USA  
408-494-0330

**3/31/2023**

Re: **EOL**

**Part Number:** KLDX-SMT2-0202-ATR; KLDX-SMT2-0202-BTR

Please note that the above part numbers are EOL due to worn tooling.

Engineering has approved an alternate part.

Please contact your Kycon Sales Representatives for details.

Alternate part numbers:

KLDX-SMT2-0202-ATR-1

KLDX-SMT2-0202-BTR-1

Redline drawing attached

Please contact your Kycon sales representative if you require more information.

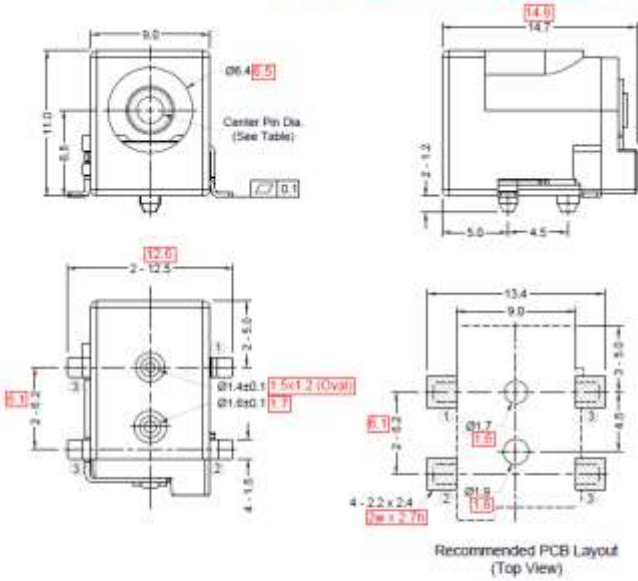
Signature: \_\_\_\_\_

A handwritten signature in black ink, appearing to read "Jill Scarnecchia", written over a horizontal line.

Name: Jill Scarnecchia      Phone: 408-494-0330

KYCON, Inc. 305 Digital Drive, Morgan Hill, CA 95037 (408)494-0330

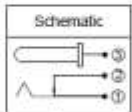
As Compared to KLDX-SMT2-0202-xTR Rev. B5



**Materials and Finish**  
Housing: High Temperature Thermoplastic, UL 94V-0 Rated, Black Color  
Contact Material:  
Center Pin: Copper Alloy, Nickel Plated  
Contact #1: Copper Alloy, Silver Plated  
Contact #2: Copper Alloy, Silver Plated  
Contact #3: Copper Alloy, Silver Plated

**Electrical Characteristics**  
Rated Current: 5A **0.5A**  
Rated Voltage: 20V DC **2.0V**  
Insulation Resistance: 100 Megohms Min. at 500V DC  
Contact Resistance: 30 Milliohms Max. (Initial)  
60 Milliohms Max. (After Durability)  
Dielectric Withstanding Voltage: 500V AC RMS for 1 Minute

**Mechanical Characteristics**  
Insertion Force: 0.3 Kg - 3.0 Kg **0.0**  
Withdrawal Force: 0.3 Kg - 3.0 Kg  
Durability: 5000 Mating Cycles Min.  
Operating Temperature: -35°C to +85°C **0 to 100°C**



Part Number	Center Pin Dia.	
KLDX-SMT2-0202-ATR-1	Ø2.0 <sub>±0.1</sub>	<b>07.00</b>
KLDX-SMT2-0202-BTR-1	Ø2.5 <sub>±0.1</sub>	<b>08.00</b>

RoHS COMPLIANT

Tolerances
X.X ± 0.25
X.XX ± 0.25
Unless Stated Otherwise

**PRELIMINARY**  
PART IN DESIGN  
SPECIFICATION SUBJECT TO CHANGE

REV.	DATE	DESCRIPTION	REV. BY	CHK. BY	DRAWN BY	DATE
01	11/08/02	NEW DESIGN	C. KALLAHER	C. KALLAHER	C. KALLAHER	11/08/02
02	06/11/01	DESIGN CHANGE	C. KALLAHER	C. KALLAHER	C. KALLAHER	06/11/01

**KLDX-SMT2-0202-xTR-1**  
UNITS: mm  
\* = Center Pin Option

DC Power Jack, SMT, R/A,  
Tape & Reel, RoHS Compliant

