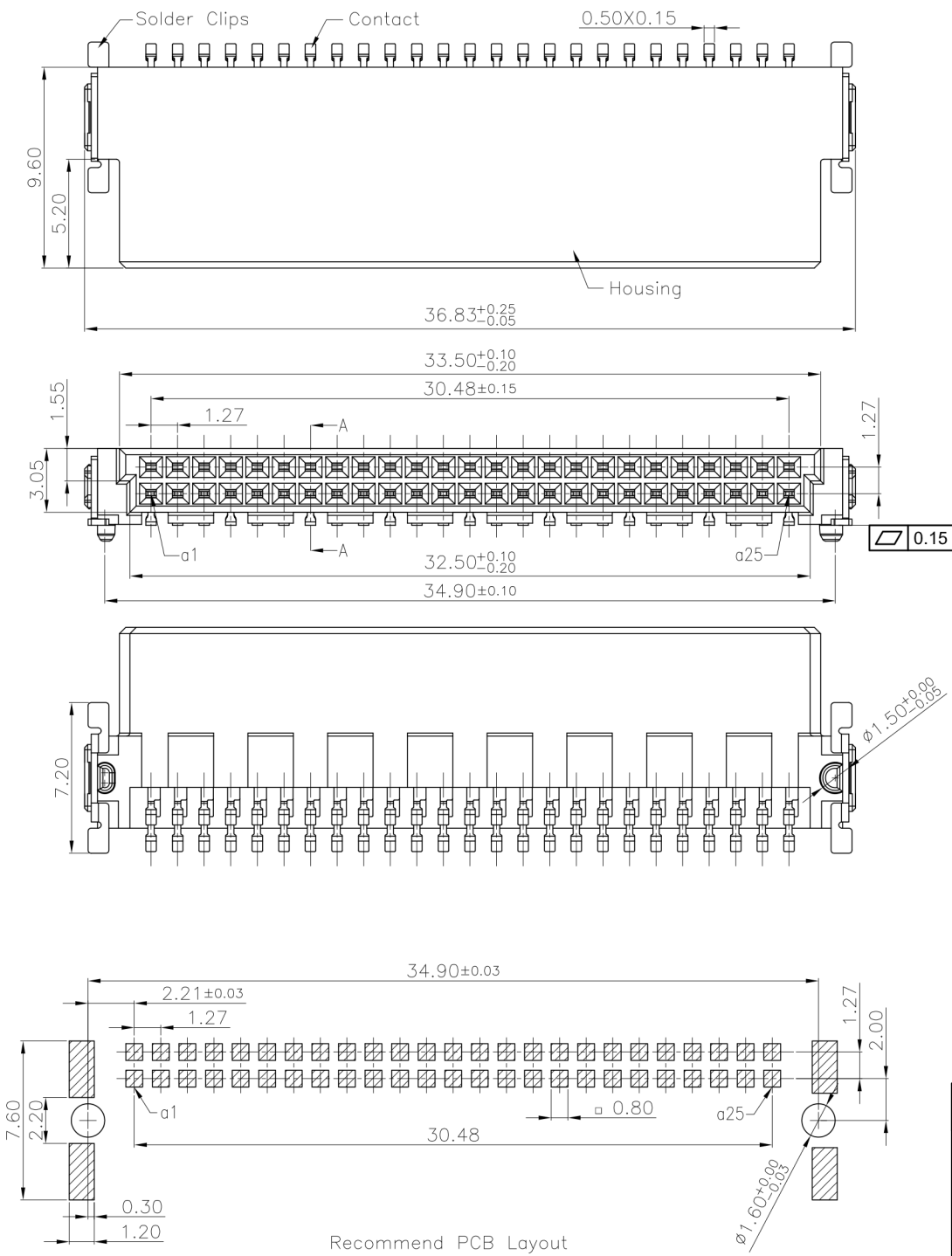


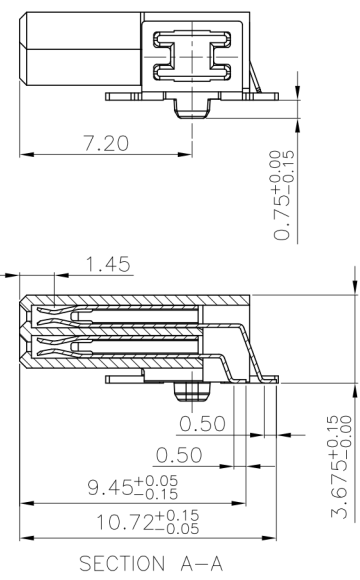
On release of the data sheet, previous releases are no longer valid. Dimensions and tolerances are subject to change.

Copying of this document, and giving it to others and the use or communication of the contents thereof, are forbidden without express authority. Offenders are liable to the payment of damages in the event of the grant of a patent or the registration of a utility model or design.



Recommend PCB Layout

**Insulator:** Thermoplastic, rated UL94 V-0  
**Contact Material:** Copper alloy  
**Contact Surface:** sel. Au/Sn over Ni  
**Contact Resistance:** 25 mΩ max.  
**Insulation Resistance:** 1000 MΩ min.  
**Test Voltage:** 500 V AC/minute  
**Temperature Range:** -55 °C ... +125 °C  
**Processing:** Reflow soldering  
**Processing Temperature:** 230 °C for 30-60 seconds (260 °C for 10 seconds)  
**Packing:** 800 pcs / reel carrier tape width 56,5 mm



Tolerances DIN ISO2768-m		Part Name		Part Number	
$\geq 0.50$	$\geq 6.00$	$\geq 30.00$	$\geq 120$	$\geq 400$	SMT Female Connector 1,27mm Pitch, horizontal
$\pm 0.10$	$\pm 0.20$	$\pm 0.30$	$\pm 0.50$	$\pm 0.80$	50-pin, sel. Au
 <b>WE CONNECT IT</b>		Index	Name	Date	Part Number
					<b>9012-50-60-TR</b>
Material		Creation date	Drawn	Checked	Approved
REACH (EG) Nr. 1907/2006		2023-02-14	AL	MV	PS
RoHS 2011/65/EU compliant		Item number		Scale	Approval date
		64591		%	2023-02-14
					Sheet