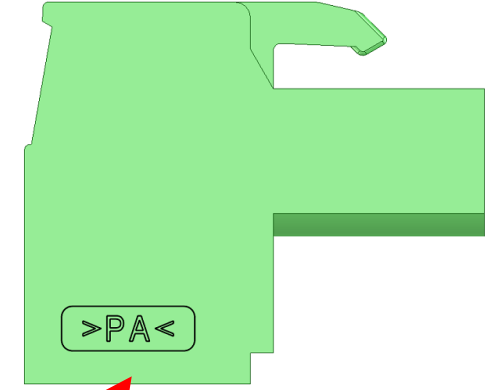
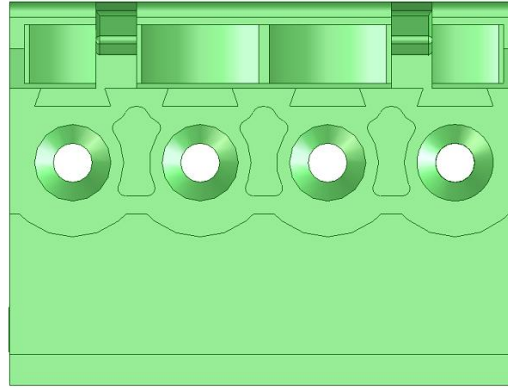
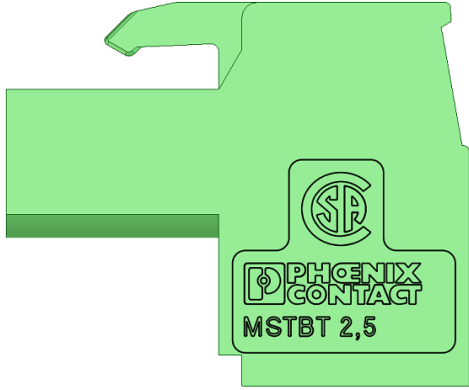


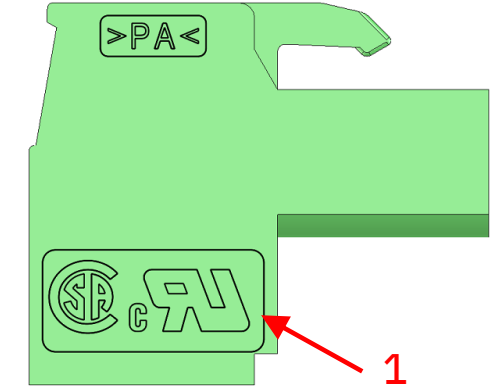
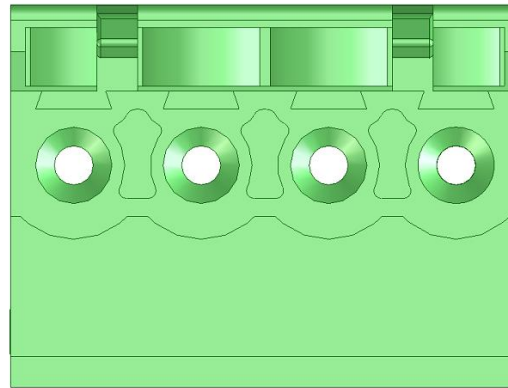
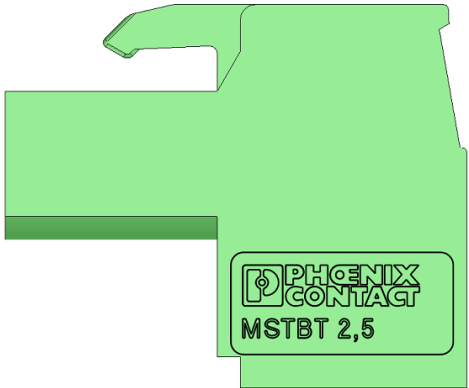
CAA 210132 comparison MSTBT 2,5/...-ST

Old: 2 - 8 positions

No changes for
9 - 18 positions



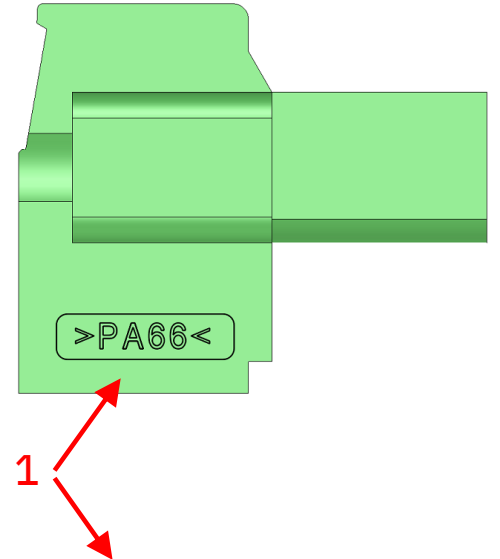
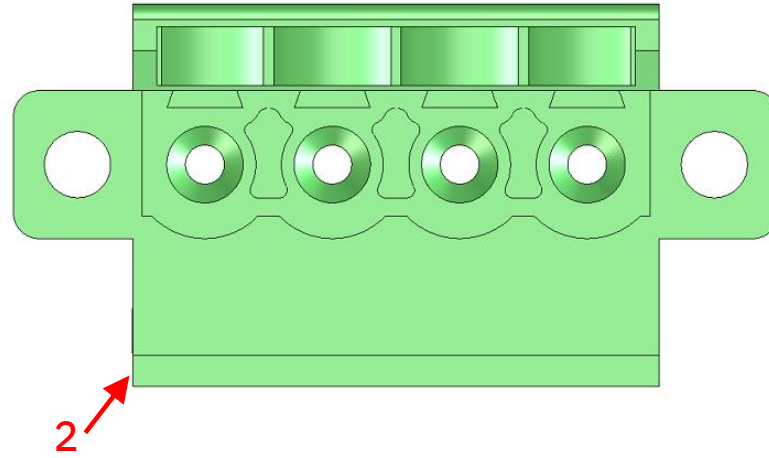
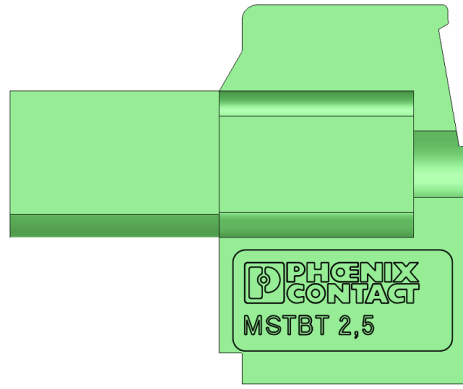
New: 2 - 8 positions



CAA 210132 comparison MSTBT 2,5/...-STF

Old: 2 - 8 positions

No changes for
9 - 18 positions



New: 2 - 8 positions

